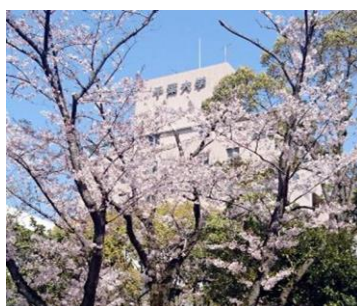


Sustainability Activities Conducted by Students in Cooperation with Companies

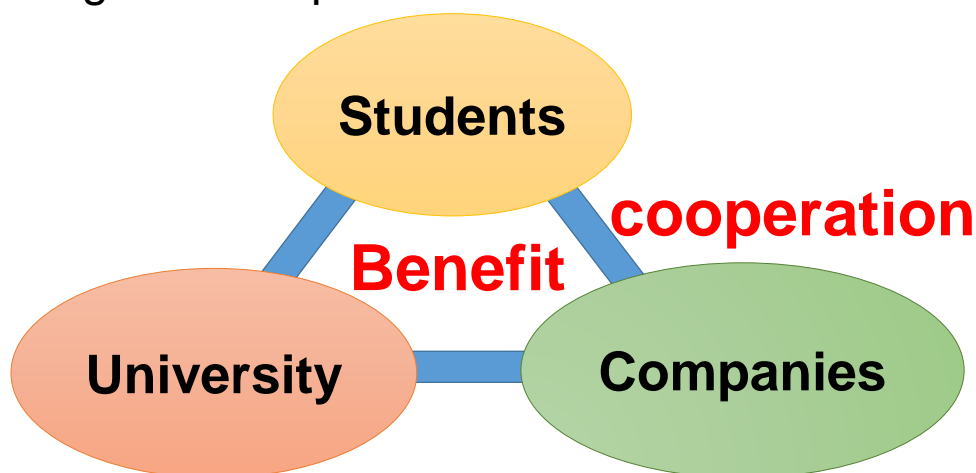


Chiba University (Japan)
Chiba University Student Committee for EMS



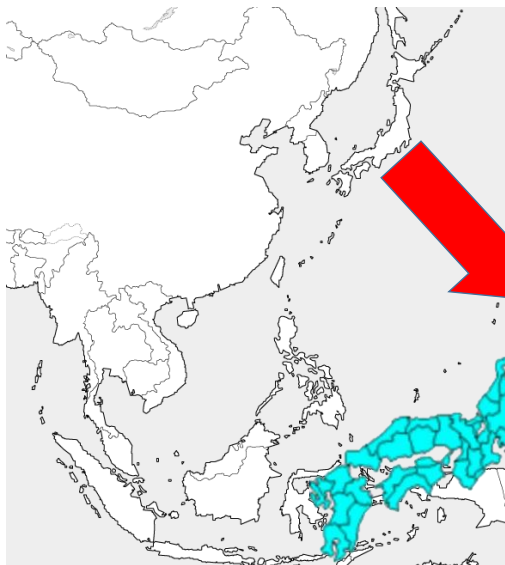
Today's topics

Students, University and companies benefit from students cooperating with companies in environmental activities.





Overview of Chiba University



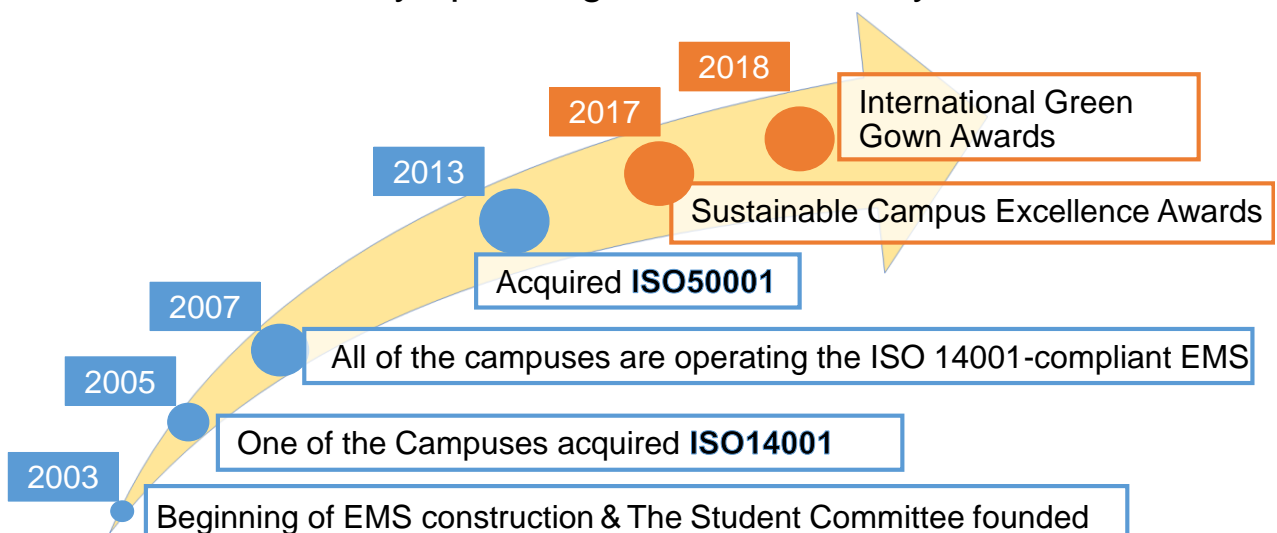
Chiba University

- National University
- Established in 1949
- 4 campuses
- Approx. 15,000 students
- Approx. 3,000 faculty staff
- 10 faculties
- 13 graduate programs



Transition of EMS at Chiba University

Students are actively operating the EMS for 16 years.



Increase awareness of SDGs

Environmental and Energy Policy of Chiba University

Since the Industrial Revolution, we, humankind, have developed our activities with abundant energy resources. As a result, we are now faced with various environmental problems, such as global warming, pollution by chemical substances and loss of biodiversity of living things. The environment, which is the ground of our subsistence, is just threatened by environmental loads produced by human activities.

In addition, we need to continue our efforts to solve environmental, social and economic problems at the same time under the idea that no one will be left behind to achieve the Sustainable Development Goals (SDGs) adopted at the United Nations Summit. Chiba University will contribute to the society with collective wisdom, acting as an education and research institution, to improve such a world situation at present as well as in the future.

To this end we will take the following actions:

1. Accumulating the wisdom of natural and social sciences, we advance practice of environmental education and research, taking advantage of the characteristics as a university in cooperation with the attached schools.
2. We promote energy and resource saving measures by cycling the use of resources, buying goods considering the environment, and protecting vegetation in our campus. We also manage the safety use of chemical substances to prevent pollution. Through these activities we realize a lush campus with a light environmental load. Above all we understand and comply with legal requirements about the environment and energy which Chiba University agrees with.
3. The environmental and energy management system is constructed and operated by the students as main constituents. We also encourage voluntary activities by the students, aiming at a campus where a variety of environmental programs are put into practice.
4. We practice our environmental and energy management system open to the local community with reflection of their opinions.
5. We will keep the energy efficiency at the top level among national universities and improve it continuously. We also report designing products and drafts of service and facility which lead to improvement in energy performance.

Standing on this policy, we establish the targets, take actions to realize them, and think better of the environmental management system by auditing the actions for continuous improvement of the system. This environmental policy is documented and communicated to the people concerned, including the faculty, staff and students of Chiba University, and related business people who are usually stationed there, and released to the public in a document and on website.

April 1, 2004 Enactment
April 1, 2008 Second revision
July 24, 2013 Third revision
April 1, 2019 Fourth revision

Takeshi Tokuhisa
President of Chiba University

Revision of the Environmental and Energy Policy

We need to continue our efforts to solve environmental, social and economic problems at the same time under the idea that no one will be left behind **to achieve the Sustainable Development Goals (SDGs)**

Increase awareness of SDGs



The name is renamed
"Environmental Report"



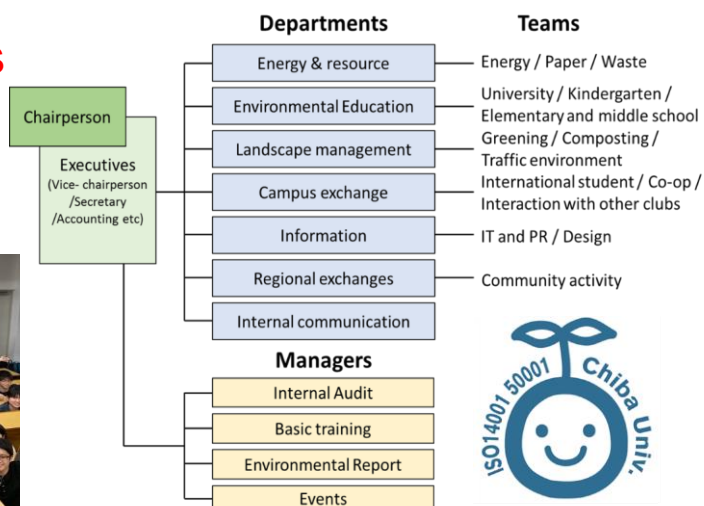
"Sustainability Report"

Overview of the Student Committee

- Launched in 2003
- Approx. **200 members**
- EMS core operations
- **20 groups**



The organization chart (2019)



Activities of the Student Committee

Main activities at the University

1. Core operations of EMS
2. Ecological awareness raising activity
3. Reuse/Recycle activity
4. Environmental education activity
5. Greening activity

Cooperation with companies

1. Eco project with a local bank
2. Environmental event project
3. Utilization of used paper project
4. Satoyama preservation project

1. Core operations of EMS

EMS Basic Trainer



EMS Internal auditor



2. Ecological awareness raising activity

- Put up **posters** and **stickers**
- Distribute **fans**.



fan

Cool biz poster



3. Reuse/Recycle activity

- Collect and sell **used bicycles** and **books**.
- Make **compost** with fallen leaves and garbage.



4. Environmental education activity

- Hold **eco-classes** and **events**.



5. Greening activity

- Create **community gardens**.
- Make **green curtains**.



Activities of the Student Committee

Main Activities at the University

1. Core operations of EMS
2. Ecological awareness raising activity
3. Reuse/Recycle activity
4. Environmental education activity
5. Greening activity

Cooperation with companies

1. Eco project with a local bank
2. Environmental event project
3. Utilization of used paper project
4. Satoyama preservation project

Cooperation with companies

**Eco project
with a local
bank**

**Environmen
tal event
project**

**Utilization of
used paper
project**

**Satoyama
preservation
project**

Cooperation with companies(1)

Eco project with a local bank

～Take a rainbow from Chiba to the world～



Three main collaboration points

1. The **funds** from Keiyo Bank to the Student Committee
2. The company **consulting** by students for
“Eco Action 21” authentication of EMS within Japan
3. Seven environmental contribution **projects**
come from student’s ideas

1. The **funds** from Keiyo Bank to the Student Committee

Students present their activities at domestic and international conferences to promote sustainable campuses.



2. The company **consulting** by students for “EA21”

- The Bank introduces companies.
- Students do consulting.



※Eco Action 21 : Authentication of EMS within Japan

3. Seven environmental contribution projects

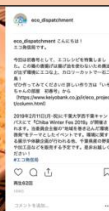
For companies



For nature



For citizens



3. Seven projects ~for companies~

1 Environmental seminar for companies



2 Keiyo Bank eco-challenge for companies



3. Seven projects ~for nature~

3 Clean action



3. Seven projects ~for citizens~

4 Local production for local consumption fair



5 Children-eco-festival



3. Seven projects ~for citizens~

6 Ecology dispatch center



7 Urban mine excavation project



Cooperation with companies

Eco project
with a local
bank

Environmental event
project

Utilization of
used paper
project

Satoyama
preservation
project

Cooperation with companies(2)

Environmental event project



Outline of Chiba Winter Fes

“Hold an environmental event that involved the region”



- Aim: Environment and fun
- Since: 2018
- Action of students: Organizer, Planning, Management
- Sponsored: 15 companies
- Funding: 0.7 million yen
- Visitor: about 1,500

Contents 1 ~Fun~

Dance Show



Concert



Characters



Food Stalls



Contents 2 ~Environment~

Eco Panels



Games for children



Fuel cell vehicle



Garbage sorting



Cooperation with companies

Eco project
with a local
bank

Environmen
tal event
project

Utilization of
used paper
project

Satoyama
preservation
project

Utilization of used paper project



Change for profit

Until 2017 : used papers collected for free

Students' suggestion

From 2017 : Change for profit

The Student Committee receive parts of proceeds

Environmental awareness products

- Manufacture and hand out or sell products.
- Use the profits to the discount.



Book cover made of used papers



Fan and notebook made of thinnings

Cooperation with companies

**Eco project
with a local
bank**

**Environmen
tal event
project**

**Utilization of
used paper
project**

**Satoyama
preservation
project**

Satoyama preservation project



About “Satoyama”

- Japanese traditional landscape.
- Adjacent to the villages, and it is cared by residents.
- Rich ecosystem.



For conservation the Satoyama

- Tree planting, weeding, and tree felling.
- Environmental education and awareness for participants.



Cooperation with companies

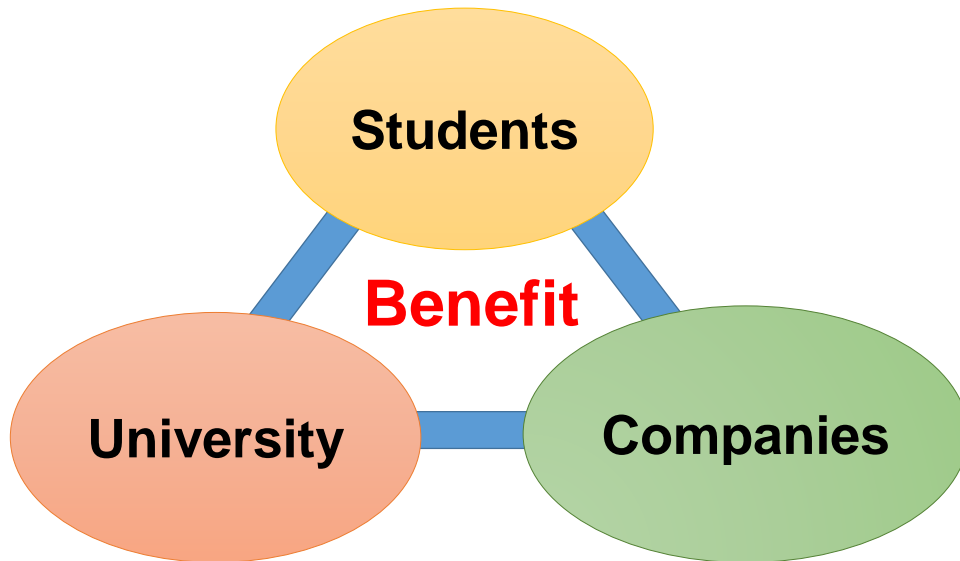
**Eco project
with a local
bank**

**Environmen
tal event
project**

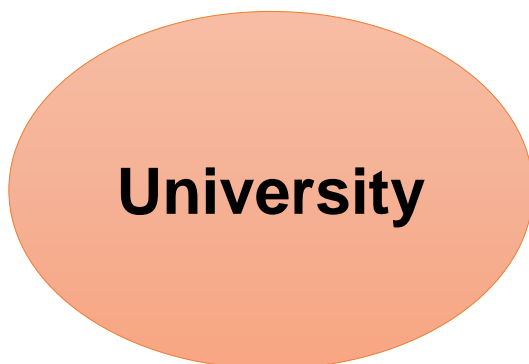
**Utilization of
used paper
project**

**Satoyama
preservation
project**

Benefit from students cooperating with companies



Benefit from students cooperating with companies



- Get donations

Benefit from students cooperating with companies



Students

- Social experience
- Acquire practical skills
- Broaden the range of activities

Benefit from students cooperating with companies



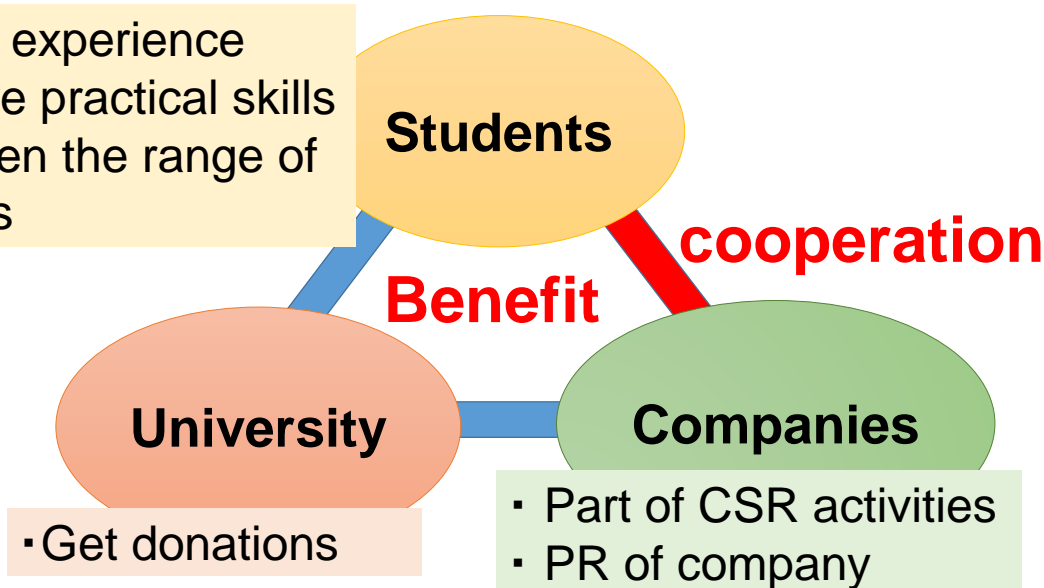
Companies

- Part of CSR activities
- PR of company

※CSR: corporate social responsibility
※PR: public relations

Benefit from students cooperating with companies

- Social experience
- Acquire practical skills
- Broaden the range of activities



Thank you for listening.

谢谢您的聆听。

ご清聴ありがとうございました。

들어 주셔서 감사합니다.

ขอบคุณสำหรับการฟัง.