

PROGRAM HIGHLIGHTS

節目亮點

Beginners welcome

初學者歡迎

our staff will guide you in an easy-to-understand manner even if you are a first-timer in fishing. You can relax and enjoy yourself in a safe environment.

即使您是第一次嘗試垂釣，我們的工作人員將以淺顯易懂的方式指導您。您可以在安全的環境中放鬆身心，盡情享受。

Abundance of Suruga Bay's seafood

駿河灣海鮮豐富

Suruga Bay has bountiful fresh seafood. You can take home your fresh catch.

駿河灣擁有豐富的新鮮海鮮。您可以把新鮮捕獲的魚帶回家。

Breathtaking views of Mt. Fuji

富士山的絕景

Fishing amidst the gigantic presence of Mount Fuji is exceptional. Let's snapshot some memorable photos.

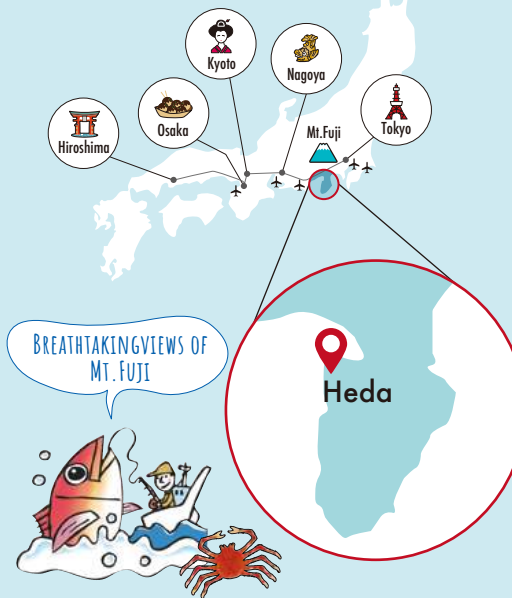
在富士山的巍峨陪伴下垂釣是不同凡響的體驗。讓我們拍攝一些難忘的照片吧。

Interpreter support

口譯服務

English- and Chinese-speaking staff are available for your comfort and convenience without worrying about language barriers.

此旅遊配有英語和中文的口譯人員為您提供舒適便利的服務，所以不需擔心會有語言溝通障礙。



ACCESS

Public Transportation 公共交通工具

Tokyo Station 東京站	Nagoya Station 名古屋站
JR Tokaido Shinkansen /45 minutes by Hikari /60 minutes by Kodama	JR Tokaido Shinkansen /80 minutes by Hikari /110 minutes by Kodama
JR 東海道新幹線 /Hikari 45分鐘 /Kodama 60分鐘	JR 東海道新幹線 /Hikari 約80分鐘 /Kodama 約110分鐘
Mishima Station 三島站	Mishima Station 三島站
Izu-hakone Railway (30 min.)	伊豆箱根鐵道 約30分鐘
Mishima Station 修善寺站	Mishima Station 修善寺站
1 minute walk	步行1分鐘
Tokai Bus Shuzenji Station 東海巴士 修善寺站	Tokai Bus Shuzenji Station 東海巴士 修善寺站
Bus stop #3 bound for Heda (50 min.)	3號乘車處 往戸田 約50分鐘
Heda 戸田	Heda 戸田

Heda Tourist Association
Shizuoka-ken, Numazu-shi, Heda 289 -12
<https://www.deep-heda.com>



Enjoying Majestic Views of Mount Fuji
Experiencing Fishing Tour in Suruga Bay!

欣賞富士山壯麗景色
享受在駿河灣 (Suruga Bay) 體驗垂釣之旅!

Guided Tour FISHING IN JAPAN ... - IZU, SHIZUOKA -

● BEGINNERS
WELCOME
初學者歡迎

● ABUNDANCE OF
SURUGA BAY'S
SEAFOOD
駿河灣海鮮豐富

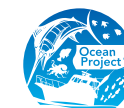
● BREATHTAKING
VIEWS OF
MT. FUJI
富士山的絕景

● INTERPRETER
SUPPORT
口譯服務

FISHING TOUR IN HEDA

戸田 (Heda) 的垂釣之旅

Empty-handed
is OK!
空手而來 OK!



Ocean Project
オーシャンプロジェクト

<https://www.fishingtour-jp.com/en>



GO BOAT FISHING IN NISHI-IZU'S HEDA!

在西伊豆戶田享受船釣樂趣！

The best way to enjoy Mt. Fuji, Japan's greatest mountain, from a boat!

可以從船上欣賞日本第一的富士山，最高等級的旅遊情境！

A fantastic location, from which Mt. Fuji looms right in front of you. Suruga Bay is Japan's deepest bay. Being an inner harbor, the sea in it is calm, and filled with fish. And because there are few large waves, the chances of getting seasick are below 1%! Even those who don't normally like boats can enjoy fishing with peace of mind.

眼前就能直接欣賞富士山美景的絕佳位置。「駿河灣」作為日本沿海最深海灣而聞名於世。而且因駿河灣大部分區域都被陸地包圍，所以海面相當平穩，還能捕撈到非常豐富的漁獲。且因為海面很平穩，暈船的機率不到 1%！不習慣搭船的人也可以安心享受船釣樂趣。

The charm of Nishi-izu's Heda

西伊豆戶田的魅力

Mt. Fuji, Japan's highest mountain at an elevation of 3,776 meters, can be seen from Suruga Bay. The difference in elevation from the summit of Mt. Fuji to the deepest part of Suruga Bay is over 6,000 meters, making it one of Japan's most dynamic topographies. Heda in Numazu City has long flourished as a fishing town centered around Heda Port, surrounded by Cape Mihama, which stretches out in a unique shape toward Suruga Bay. Visitors here can enjoy a variety of deep-sea fish dishes that are rarely eaten anywhere else, including the world's largest spider crab, which is caught in Suruga Bay.

從駿河灣就可以看到海拔 3776 公尺日本第一的富士山。從富士山山頂到駿河灣最深處有著 6000 公尺以上的落差，擁有日本國內高度變化最激烈的地形。

戶田港被朝向駿河灣以獨特形狀延伸的御濱岬所環繞，而沼津市戶田地區則以戶田港為中心發展，自古以來就是一個漁業興旺的港町。在駿河灣捕撈上岸的漁獲以世界體型最大的甘氏巨螯蟹（又稱高腳蟹、高足蟹）為首，還能夠品嚐到多種其他地方相當少見的深海魚料理。

Heda Port Plan

戶田港旅遊方案

Easy access from Tokyo!

從東京出發的交通便利！

Come Empty-handed!

空手來也沒問題

All equipment is available for rent!

所有工具都能現場租借

Cook and eat the fish you catch

釣到的魚可現場調理直接品嚐

The fish you catch will be cooked for you on the spot by a local chef. As a special plan, you can also experience making and tasting hand-rolled sushi with the fish you caught.

釣到的魚會交由附近的廚師現場調理。

而且做為特別旅遊方案，參加者還能一邊感受將捕撈的漁獲親手做成手捲壽司的體驗，一邊品嚐美味的料理。



Mihama Misaki Park
御濱岬公園



Deai Misaki
相逢岬



Important Cultural Property Matsushiro
Family Residence 重要文化財松城家住宅



Heda Shipbuilding Museum
戶田造船資料博物館