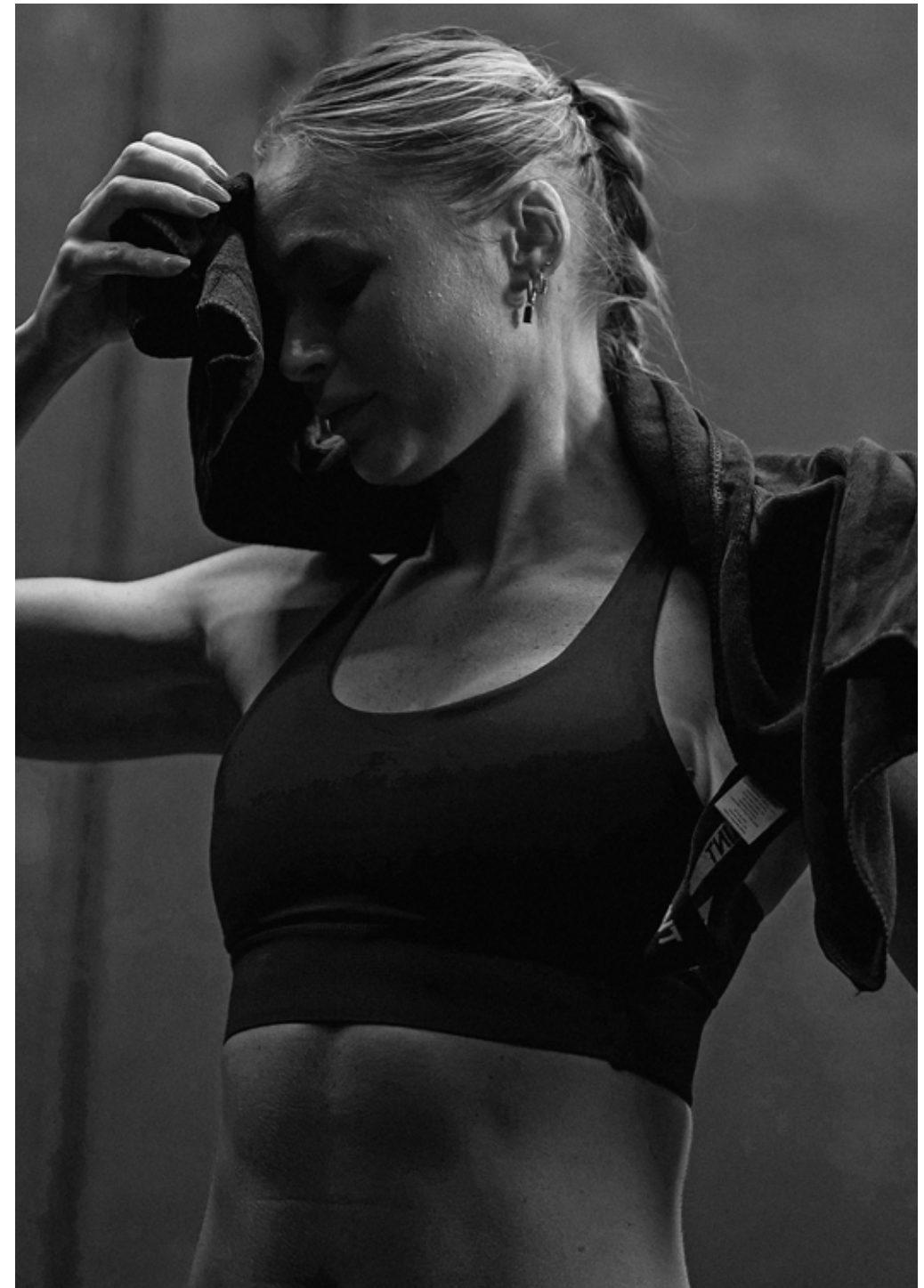




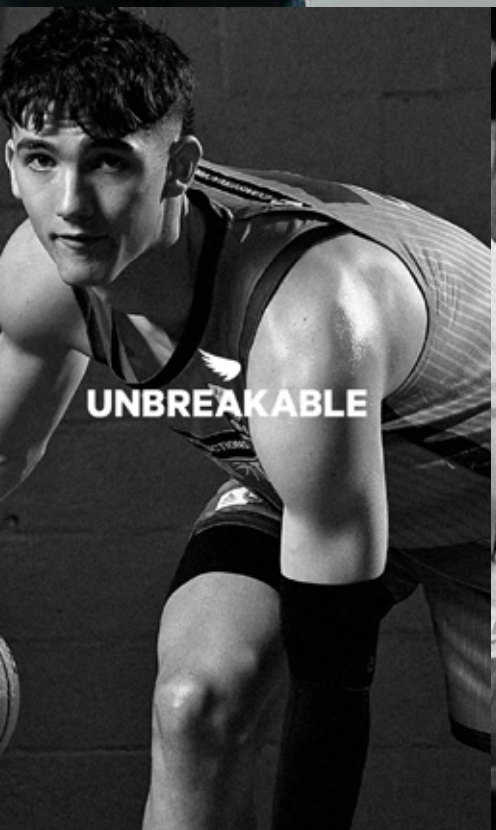
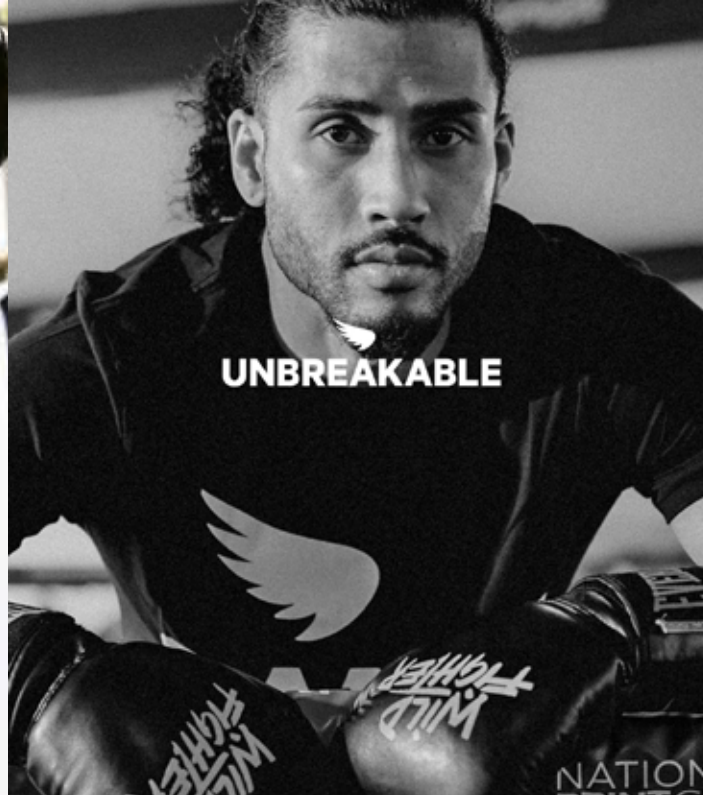


WE CELEBRATE THE UNBREAKABLE HUMAN SPIRIT

Our core emotional driver is our wonder, awe and respect for the unbreakable human spirit. This thinking and brand feeling underpins everything we do from Moto to Sport.



In the face of every obstacle, the unbreakable athlete stands tall. They embody the power of persistence. They know that strength isn't just measured in speed or strength—it's measured in the ability to rise every time they fall. They understand that true victory or reward is found in true grit, in the effort, and in the heart that refuses to quit.





**SA1NT IS REVOLUTIONISING
SPORTS PERFORMANCE
THROUGH FABRIC
TECHNOLOGY LED BY
INNOVATION.**

**WE HAVE DESIGNED THE
ULTIMATE COMBINATION OF
COMPRESSIVE + LIGHTWEIGHT
ENGINEERED APPAREL FOR
SPORTS PERFORMANCE AND
RECOVERY**

SA1NT IS A COMBINATION OF SCIENTIFIC + ATHLETIC



SCIENTIFIC

FUNCTIONAL APPAREL DEFINED BY
SPORTS SCIENCE PRINCIPLES TO MEET
THE DEMANDS OF PROFESSIONAL AND
AMATEUR SPORTS AMBITION AND
ENDEAVOUR



ATHLETIC

HIGH PERFORMANCE SPORTS
APPAREL BACKED BY SPORTS
SCIENCE TESTING AND
PRINCIPLES



THERE IS NO
CLEARER
ADVOCACY
THAN BEING
ACCEPTED,
UTILISED AND
PROMOTED
BY THE BEST.



FABRIC TECHNOLOGY LED BY INNOVATION

REVOLUTIONIZING SPORTS PERFORMANCE

In a landscape saturated by convention, SA1NT emerges as a disruptive force, poised to dominate the intersection of cutting-edge technology and fabrics with a human-centric design. Our brand is not merely a participant in the apparel industry—we are its vanguard, relentlessly redefining performance and moto wear through a singular obsession: proprietary fabric science.

Unlike competitors tethered to off-the-shelf solutions, SA1NT engineers revolutionary materials from fibre foundations, marrying uncompromising garments with the human form.

We drive the mills for greater output and more unique fabrics, delivering our customers the best and most unique performance and value for money.

SA1NT is revolutionizing performance apparel by obsessively crafting proprietary fabrics that redefine human potential. We merge bio mechanical precision with relentless R&D to solve unmet needs across motorsport and athletic markets. Our unique and patented materials —engineered at the molecular level— deliver unrivaled protection, agility, and endurance, transforming garments into performance-enhancing layers.

While competitors chase trends, we pioneer them, owning every link of our innovation chain from lab to consumer. We don't just clothe the body—we elevate it. Join us in the future of performance.



PROJECT-1

[2025/ 2026]

ADVANCED PROPRIETARY TEXTILE TECH
TO OPTIMIZE MUSCULAR STABILITY,
CIRCULATION, THERMO REGULATION AND
MOISTURE MANAGEMENT —ENGINEERED FOR
PEAK HUMAN PERFORMANCE.

{L1TE RUN}

{L1TE MESH}

{L1TE POWER COMPRESSION}

[PROJECT-1/ ELITE PERFORMANCE]

ADVANCED PROPRIETARY TEXTILE
TECHNOLOGY TO OPTIMIZE MUSCULAR
STABILITY, CIRCULATION, THERMO
REGULATION, AND MOISTURE WICKING
—ENGINEERED FOR PEAK HUMAN
PERFORMANCE.

[MUSCLE SUPPORT TECH]

L1TE POWER COMPRESSION

L1TE Power Compression is an incredible lightweight circular knit compression fabric that is just 225gsm but delivers the power and benefits of fabrics 30% heavier.

Combining an innovative anatomical muscle support technology that is fused to the fabric (Muscle Mapping+) with proprietary lightweight fabrics (L1TE), this garment range supports key muscle groups, boosts blood flow, aids circulation, reduces the risk of injury, increases muscle efficiency, reduces fatigue and aids with a faster recovery.

[TECH]

- 225GSM COMPRESSION FABRIC
- MEDICAL-GRADE FABRICS
- MUSCLE MAPPING+

[MOISTURE MANAGEMENT TECH]

L1TE RUN

L1TE RUN is an incredible fabric, soft to touch yet highly capable of moisture management and cool on the skin with the addition of Xylitol.

All these benefits of comfort in a fabric that weighs in at just 93gsm. It's SA1NT's super fibre of moisture management in hot climates or in intensive workouts.

[TECH]

- 93GSM POLYESTER
- XYLITOL COOLING
- GREEN MANUFACTURING

[AIRFLOW/ VENTING TECH]

L1TE MESH

L1TE MESH has an incredible 3D structure that maximizes cooling through airflow, dissipating heat away from the core and adding to comfort and performance. Weighing in at 80gsm this fabric is very lightweight due to the micro polyester. It has an excellent next-to-skin feel with extra softness, durability and ease of care. This is also a recycled material. It has excellent permeability, sweat wicking and is quick drying.

[TECH]

- 80GSM POLYESTER
- TECH SOFT WEAVE
- RECYCLED MATERIAL



LITE
M E S H

96
GSM

- + LITE MESH VENTING TECHNOLOGY FOR THERMO REGULATION IN HOT CLIMATES, INTENSIVE COMPETITION OR TRAINING
- + ENGINEERED TO BE THE LIGHTEST 96GSM RUN FABRIC THAT DELIVERS THE MAXIMUM MOISTURE MANAGEMENT AND VENTILATION



LITE
R U N

80
GSM

- + ADVANCED MOISTURE MANAGEMENT TECHNOLOGY THAT KEEPS WITH THE DEMANDS OF INTENSIVE COMPETITION OR TRAINING
- + SUPER LIGHTWEIGHT 3D 80GSM KNITTED MESH BACK PANEL FOR MAXIMUM AIRFLOW AND HEAT RELEASE



LITE
COMPRESSION

225
GSM

+ 225 COMPRESSION FABRIC
A LIGHTWEIGHT YET POWERFUL CIRCULAR KNIT
COMPRESSION FABRIC, DELIVERING OUTSTANDING
SUPPORT AND FABRIC MEMORY. AT JUST 225GSM THIS
IS PERFECT FOR THE HOT CLIMATES OR INTENSIVE
PHYSICAL ACTIVITY.

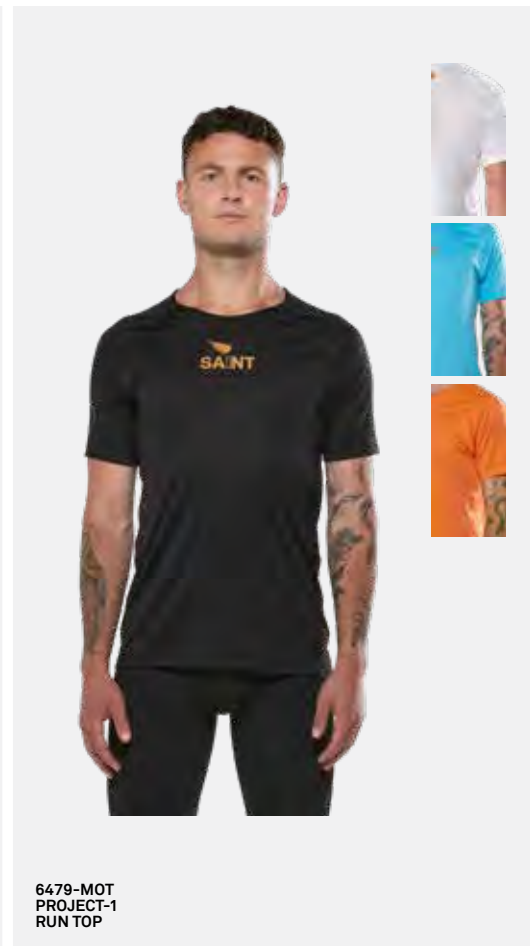
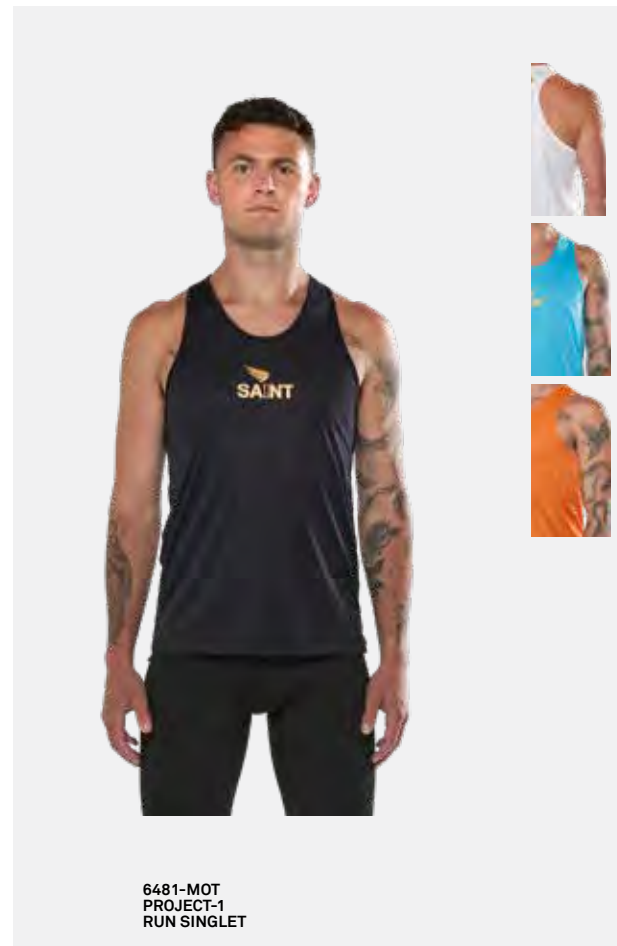
PROJECT-1/ TECH



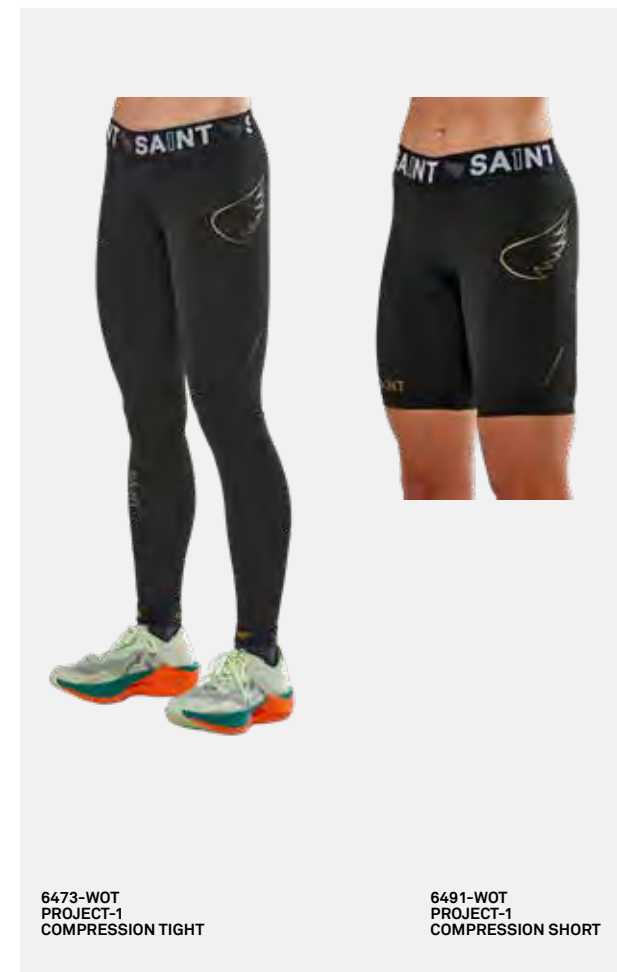
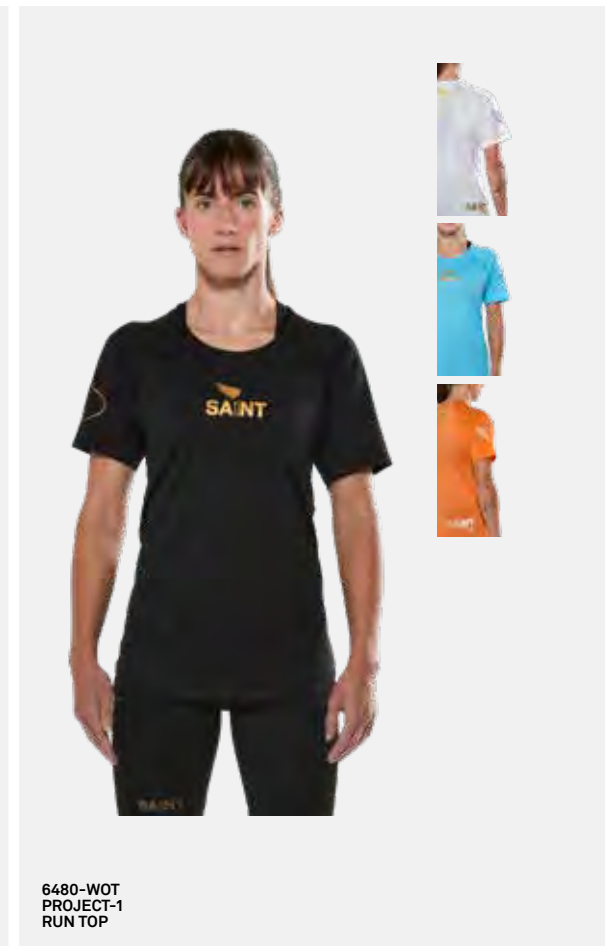
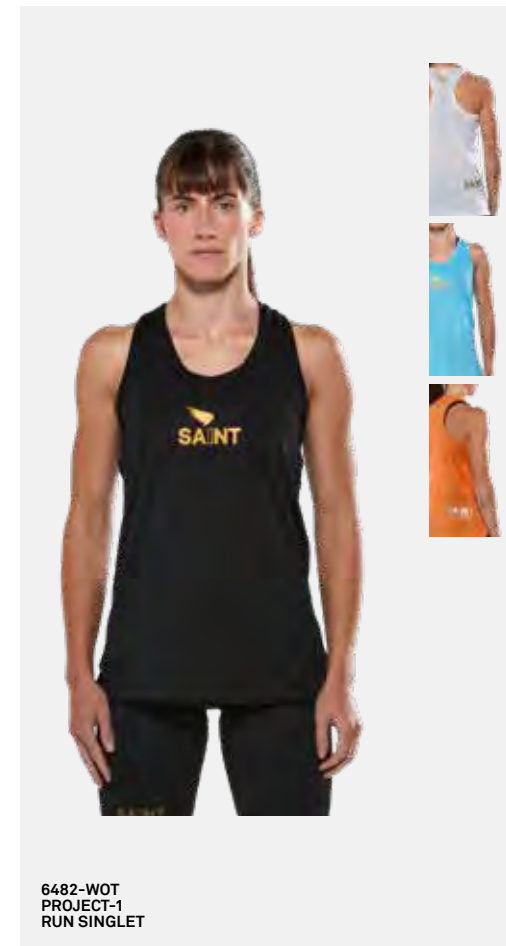
+ MUSCLE MAPPING+
ERGONOMICALLY DESIGNED FLOCKED SILICON PRINT TO
MAP QUADRICEPS AND CALVES. ENHANCES FABRIC
POWER GIVING GREATER SUPPORT, HELPING TO
REDUCE RISK OF INJURY AND INCREASE MUSCLE
EFFICIENCY.



+ MUSCLE MAPPING+
ERGONOMICALLY DESIGNED FLOCKED SILICON PRINT TO MAP
QUADRICEPS AND CALVES. ENHANCES FABRIC POWER GIVING
GREATER SUPPORT, HELPING TO REDUCE RISK OF INJURY AND
INCREASE MUSCLE EFFICIENCY.



PROJECT-1



COMPRESSION POWERS
THE KEY DRIVER OF
HUMAN PERFORMANCE
— THE HEART

**CHAMPIONS
AREN'T MADE
FROM HYPE.
THEY'RE
MADE FROM
HEART.**



PROJECT-1 COMPRESSION TIGHT W/DRAW CORD

6454-MOC

SIZE ABBREVIATIONS

SS & MS = SHORT SIZING

MT & LT = TALL SIZING

SIZES

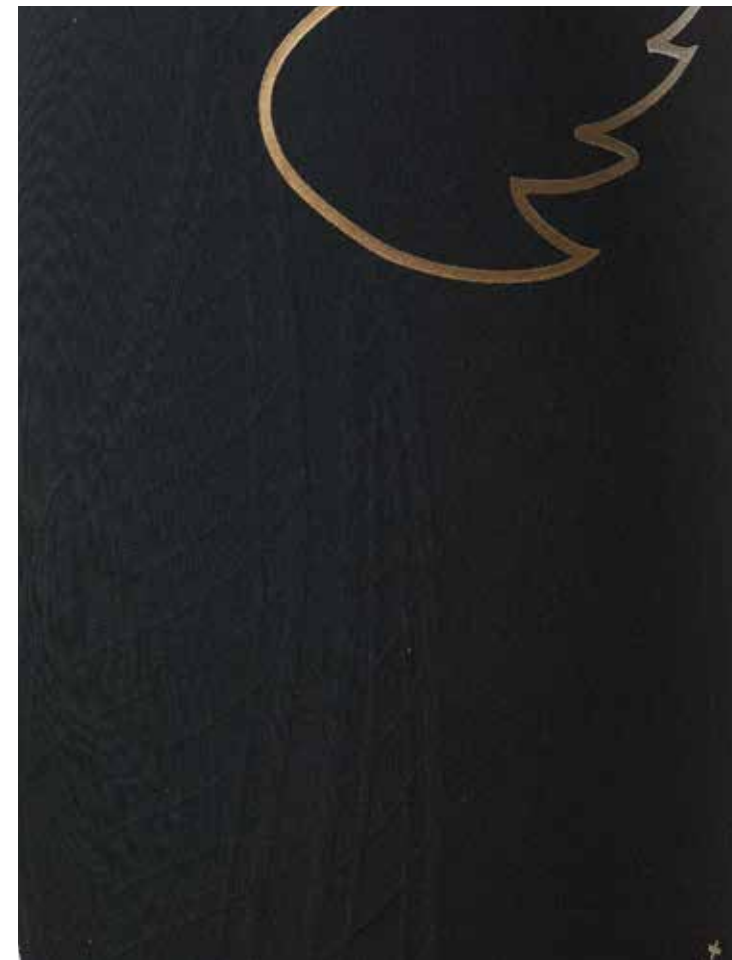
XS S M MS MT L LT MT XL XXL

DESCRIPTION

The Project-1 Compression Tight is our flagship model, with the ultimate combination of lightweight fabric, fused silicon muscle support technology and powerful compression to create ultimate the run/ performance tight. Designed to meet the rigours of hot climatic conditions and also competitive environments where the body needs the optimal moisture management, venting and muscle support such as Hyrox, Crossfit or Spartan events. This garment comes in two versions: one with a draw cord, one with a elastic waistband.

FABRIC + TECH

- + Draw cord to stop run slip
- + Double back gel pocket storage
- + Full length 225 gsm compression tights ideal for hot and/or humid environments
- + Muscle mapping+ ergonomically designed flocked silicon print, to map specific muscle groups such as quadriceps and calves. Enhances fabric power giving greater support, helping to reduce risk of injury.
- + 225 Compression fabric a lightweight yet powerful circular knit compression fabric, delivering outstanding support and fabric memory. At just 225gsm this is perfect for the hotter and more humid climates
- + Graduated compression our compression garments are graduated to be firmest at the extremity of the limb, to help blood flow and return, delivering muscle support and stability, helping to prevent damage and reduce fatigue, recover faster and perform at your peak.



PROJECT-1 COMPRESSION SHORT W/DRAW CORD

6470-MOC

SIZES

XS S M L XL XXL

DESCRIPTION

The Project-1 Compression Short is our flagship model, with the ultimate combination of lightweight fabric, fused silicon muscle support technology and powerful compression to create ultimate the run/ performance short. Designed to meet the rigours of hot climatic conditions and also competitive environments where the body needs the optimal moisture management, venting and muscle support such as Hyrox, Crossfit or Spartan events. This garment comes in two versions: one with a draw cord, one with a elastic waistband.

FABRIC + TECH

- + Draw cord to stop run slip
- + Double back gel pocket storage
- + 225 gsm compression shorts ideal for hot and/or humid environments
- + Muscle mapping+ ergonomically designed flocked silicon print, to map specific muscle groups such as quadriceps and calves. Enhances fabric power giving greater support, helping to reduce risk of injury.
- + 225 Compression fabric a lightweight yet powerful circular knit compression fabric, delivering outstanding support and fabric memory. At just 225gsm this is perfect for the hotter and more humid climates



COMPRESSION
IS CONTROL

TIGHTER
TURNS
FRESHER
LEGS
FLUSH
DUNKS



PROJECT-1

PROJECT-1 RUN SINGLET

6481-MOT

SIZES

XS S M L XL XXL XXXL

DESCRIPTION

Designed for athletes who demand more, the Men's P1 Elite Run Singlet is built with our advanced L1TE technology fabric and breathable mesh to deliver the ultimate race-day performance. Incredibly lightweight yet tough enough for the hardest sessions, it wicks sweat fast, keeps you cool, and moves with you through every stride. Whether you're lining up for your next marathon or grinding through intervals, the P1 Elite Run Singlet is your go-to for serious speed and comfort under pressure.

FABRIC + TECH

- + L1TE technology fabric for ultra-lightweight performance
- + High-breathability mesh zones for superior airflow
- + Advanced moisture-wicking for a dry, focused run
- + 4-way stretch for unrestricted movement
- + Bonded side seams for low profile comfort

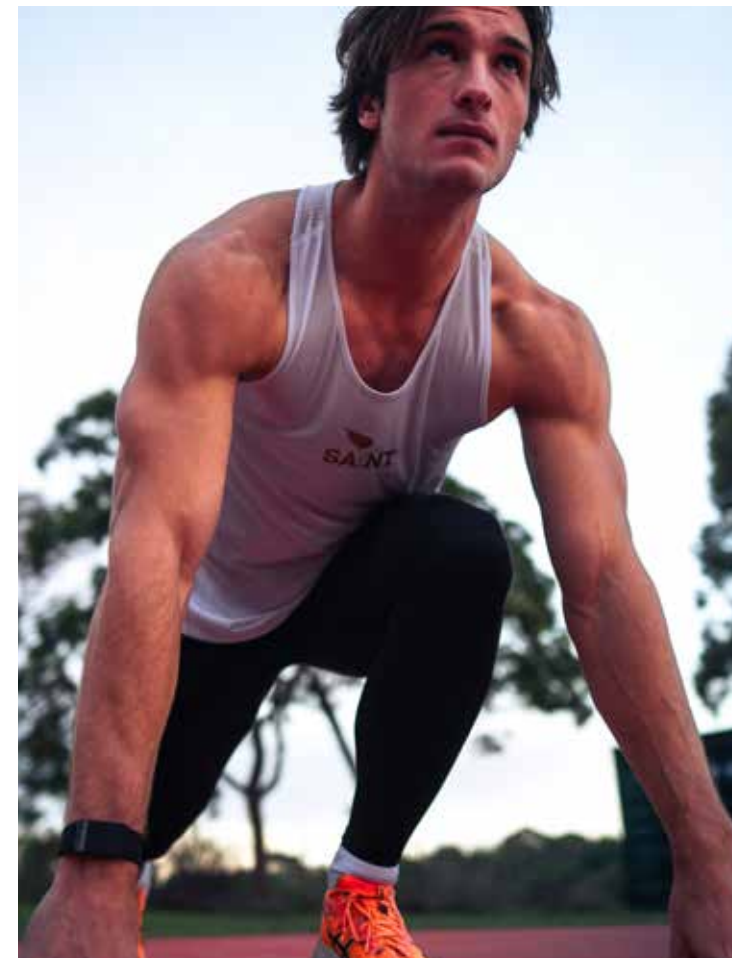
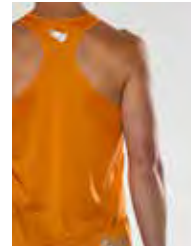
PERFORMANCE BENEFITS

- + Keeps you cool and dry even in extreme heat
- + Reduces body temperature buildup during hard efforts
- + Maximises mobility and comfort through every stride
- + Built tough for elite training and race days

IDEAL FOR

- + Hot and humid race conditions
- + Long-distance runs and endurance training
- + Speed work, tempo runs, and marathon prep
- + Athletes demanding peak performance in all climates

LITE **LITE**
M E S H R U N



PROJECT-1 COMPRESSION SHORT LOW RISE

6473-WOC

SIZE ABBREVIATIONS

SS & MS = SHORT SIZING

MT & LT = TALL SIZING

SIZES

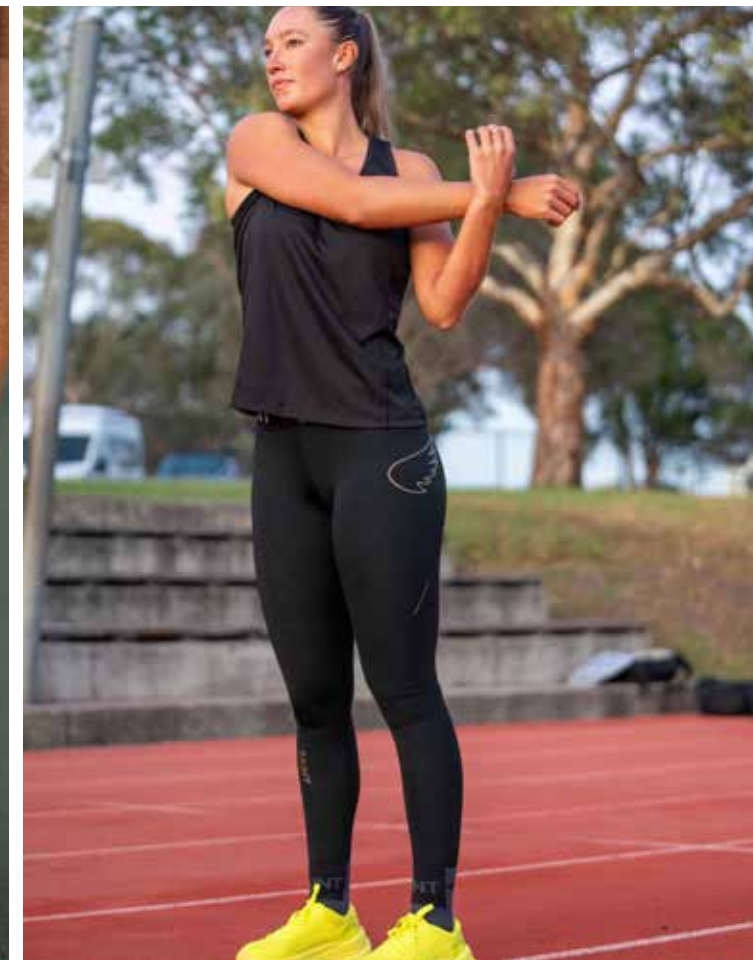
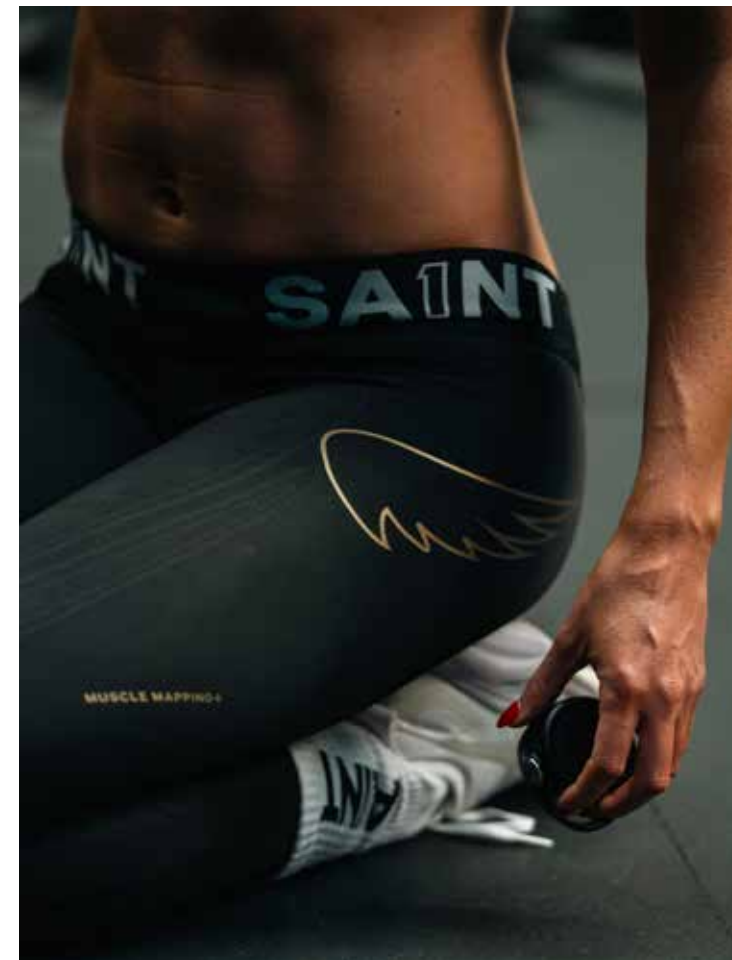
XS S M MS MT L LT MT XL XXL

DESCRIPTION

The Project-1 Compression Tight is our flagship model, with the ultimate combination of lightweight fabric, fused silicon muscle support technology and powerful compression to create ultimate the run/ performance tight. Designed to meet the rigours of hot climatic conditions and also competitive environments where the body needs the optimal moisture management, venting and muscle support such as Hyrox, Crossfit or Spartan events.

FABRIC + TECH

- + Elastic SA1NT waistband
- + Double back gel pocket storage
- + Full length 225 gsm compression tights ideal for hot and/or humid environments
- + Muscle mapping+ ergonomically designed flocked silicon print, to map specific muscle groups such as quadriceps and calves. Enhances fabric power giving greater support, helping to reduce risk of injury.
- + 225 Compression fabric a lightweight yet powerful circular knit compression fabric, delivering outstanding support and fabric memory. At just 225gsm this is perfect for the hotter and more humid climates
- + Graduated compression our compression garments are graduated to be firmest at the extremity of the limb, to help blood flow and return, delivering muscle support and stability, helping to prevent damage and reduce fatigue, recover faster and perform at your peak.



PROJECT-1 COMPRESSION SHORT LOW RISE

6491-WOC

SIZES

XS S M L XL XXL

DESCRIPTION

The Project-1 Compression Short is our flagship model, with the ultimate combination of lightweight fabric, fused silicon muscle support technology and powerful compression to create ultimate the run/ performance short. Designed to meet the rigours of hot climatic conditions and also competitive environments where the body needs the optimal moisture management, venting and muscle support such as Hyrox, Crossfit or Spartan events.

FABRIC + TECH

- + Elastic SA1NT waistband
- + Double back gel pocket storage
- + Full length 225 gsm compression tights ideal for hot and/or humid environments
- + Muscle mapping+ ergonomically designed flocked silicon print, to map specific muscle groups such as quadriceps. Enhances fabric power giving greater support, helping to reduce risk of injury.
- + 225 Compression fabric a lightweight yet powerful circular knit compression fabric, delivering outstanding support and fabric memory. At just 225gsm this is perfect for the hotter and more humid climates



PROJECT-1 RUN SINGLET

6480-MOT

SIZES

XXS XS S M L XL XXL

DESCRIPTION

Engineered for speed, built for endurance. The Women's Project-1 Run Singlet uses advanced L1TE technology fabric and breathable mesh panels to deliver the ultimate balance of lightweight performance and moisture management. Designed to keep you cool and dry when the pace picks up, this singlet moves with you, not against you, mile after mile. Whether you're chasing a new PB or battling through race day heat, the Project-1 Run Singlet is built to go the distance without weighing you down.

FABRIC + TECH

- + L1TE technology fabric for ultra-lightweight performance
- + High-breathability mesh zones for superior airflow
- + Advanced moisture-wicking for a dry, focused run
- + 4-way stretch for unrestricted movement
- + Bonded side seams for low profile comfort

PERFORMANCE BENEFITS

- + Reduces overheating during high-intensity runs
- + Supports natural movement and athletic form
- + Quick-dry technology for post-run recovery comfort
- + Built for endurance, speed, and relentless performance

IDEAL FOR

- + Hot and humid race conditions
- + Long-distance runs and endurance training
- + Speed work, tempo runs, and marathon prep
- + Athletes demanding peak performance in all climates

LITE **LITE**
M E S H R U N



CORE-PRO

[2025/ 2026]

**THE HIGH FUNCTIONING
CORE TRAINING ACTIVE WEAR RANGE
DESIGNED TO COVER ALL TYPES OF TRAINING -
FROM THE GYM TO THE TRACK
TO THE COURT.**

THE FITNESS RANGE THAT IS
YOUR GO-TO FOR EVERY DAY TRAINING
THAT HAS A COMPREHENSIVE SUITE OF
PROPRIETARY FABRICS THAT OPTIMIZE
MUSCULAR STABILITY, BOOST CIRCULATION,
THERMO REGULATION AND MOISTURE
MANAGEMENT.

CORE-PRO TRAINING T SHIRT

6306-SMG

SIZES

S M L XL XXL

DESCRIPTION

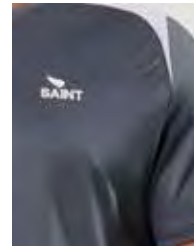
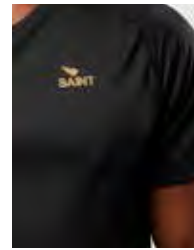
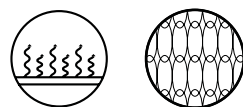
Perfect for circuit training, HIIT sessions, and weight lifting, the black SA1NT Training T-shirt is built for comfort, strength, and durability. This performance training tee is engineered with quick-drying, high-filament polyester yarns and features robust abrasion-resistant shoulder panels for added durability during even the most intense workout.

FABRIC + TECH

- + High-performance fabric made from quick-drying yarns
- + Finished with anti-bacterial technology
- + Abrasion resistance shoulder panels
- + Keeps you cool and dry, even during intense workouts.

MAIN FABRIC

- + 100% Polyester
- + Shoulder Panel: 90% Nylon 10% Spandex



CORE-PRO TRAINING TANK

6308-SMG

SIZES

S M L XL XXL

DESCRIPTION

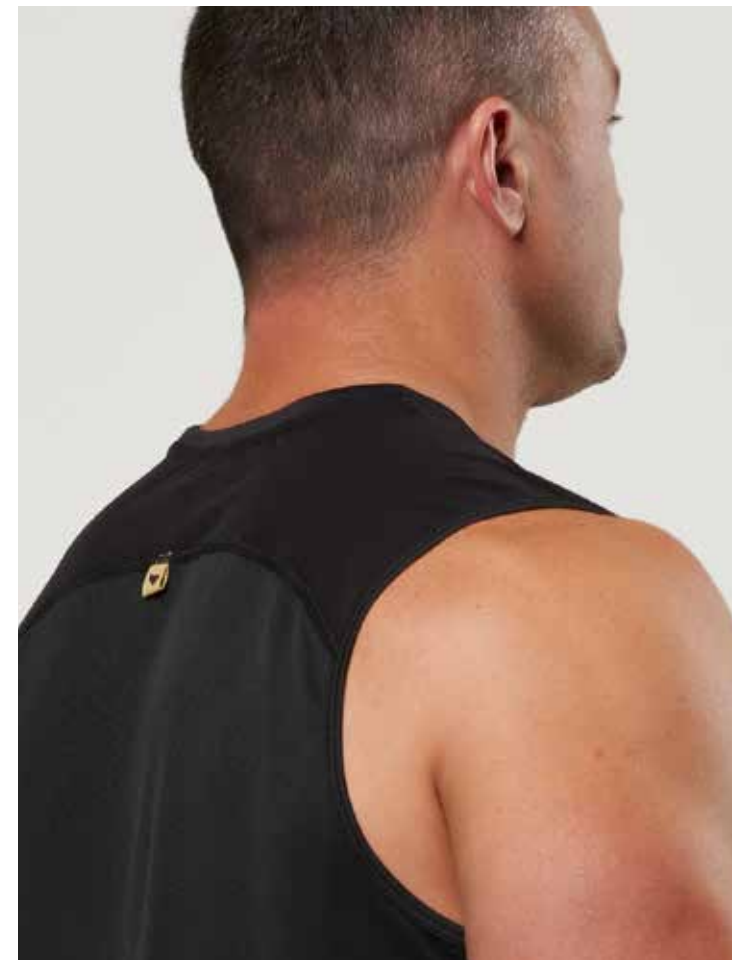
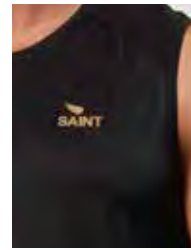
Introducing the ultimate tough sleeveless tank for your training sessions. Utilizing Quick drying high filament polyester yarns, this tank ensures you stay dry and comfortable throughout your workout. With the added durability of abrasion resistant shoulder panels, it is designed to withstand rigorous training sessions. An essential piece for any fitness enthusiast. An essential training tank.

FABRIC + TECH

- + Quick drying, high filament polyester yarns that provide maximum moisture management
- + Finished with anti bacterial technology to keep you fresher for longer
- + Versatile double knit construction fabric that features inner mesh layer to transport sweat away from the skin and disperse moisture on the surface
- + Durable abrasion resistance shoulder panels withstands surface wear from gym equipment
- + Back mesh panels for maximum ventilation
- + Three needle flatlock seams

MAIN FABRIC

- + 100% Polyester
- + Shoulder Panel: 90% Nylon 10% Spandex



PRESSURE IS
NOTHING MORE
THAN THE
SHADOW OF
GREAT
OPPORTUNITY

UNBREAKABLE HUMAN SPIRIT

CORE-PRO TRAINING 7" SHORT

6313-SMG

SIZES

S M L XL XXL

DESCRIPTION

Experience complete freedom of movement during intense HIIT, gym, or studio workouts with these 7" training shorts. Designed to move with your body, they provide unrestricted mobility, allowing you to perform at your best. Get the most out of your workout with these versatile and comfortable shorts.

FABRIC + TECH

- + Anti-bacterial technology, keeps you feeling fresh
- + Side split for increased movement
- + Durable 4-way stretch woven nylon
- + Perforated logo detail for ventilation
- + Abrasion resistant, lightweight, flexible & quick drying
- + Low profile front side pockets with hidden secured phone pocket for ample storage for all essentials
- + Bonded hem with side split for increased freedom of movement and low profile detail
- + Durable 4 way stretch woven outer for maximum freedom of movement
- + Flat elastic waistband with internal draw cord to provide a secure fit
- + Silicone printed sa1nt logo detail
- + 7" Inseam short

MAIN FABRIC

- + 90% Nylon 10% Spandex



CORE-PRO RUN SINGLET

6322-SMG

SIZES
S M L XL XXL

DESCRIPTION
Take your running to the next level with this perfect run singlet, designed to keep you cool and comfortable every step of the way. Made with high filament REPVEVE® recycled polyester yarns, this singlet effectively wicks away moisture to keep you dry during your most intense runs. Lightweight and breathable, it is perfect for both training runs and races. Get ready to go the distance with this essential piece of running gear.

- FABRIC + TECH**
- + Quick drying, high filament 100% Repreve® Recycled polyester yarns that provides maximum moisture management
 - + Versatile double knit construction fabric that features inner hexagonal mesh to transport sweat away from the skin and disperse moisture on surface
 - + Finished with anti-bacterial technology to keep you fresher for longer
 - + Flat active seams for greater comfort and reduce chafe
 - + Double-knit moisture wicking fabric
 - + Traditional run singlet fit
 - + Durable, lightweight, and eco-friendly
 - + Reflective logo details to be seen in low light

MAIN FABRIC
+ 100% REPVEVE® recycled polyester



UNBREAKABLE NEVER GIVES UP

UNBREAKABLE HUMAN SPIRIT



SAINT UNBREAKABLE

CORE-PRO//COMPRESSION

CORE-PRO

COMPRESSION POWERS
THE KEY DRIVER OF
HUMAN PERFORMANCE
— THE HEART

CHAMPIONS
AREN'T MADE
FROM HYPE.
THEY'RE
MADE FROM
HEART.



CORE-PRO RUN RACER BACK

6323-SWG

SIZES

XS S M L XL

DESCRIPTION

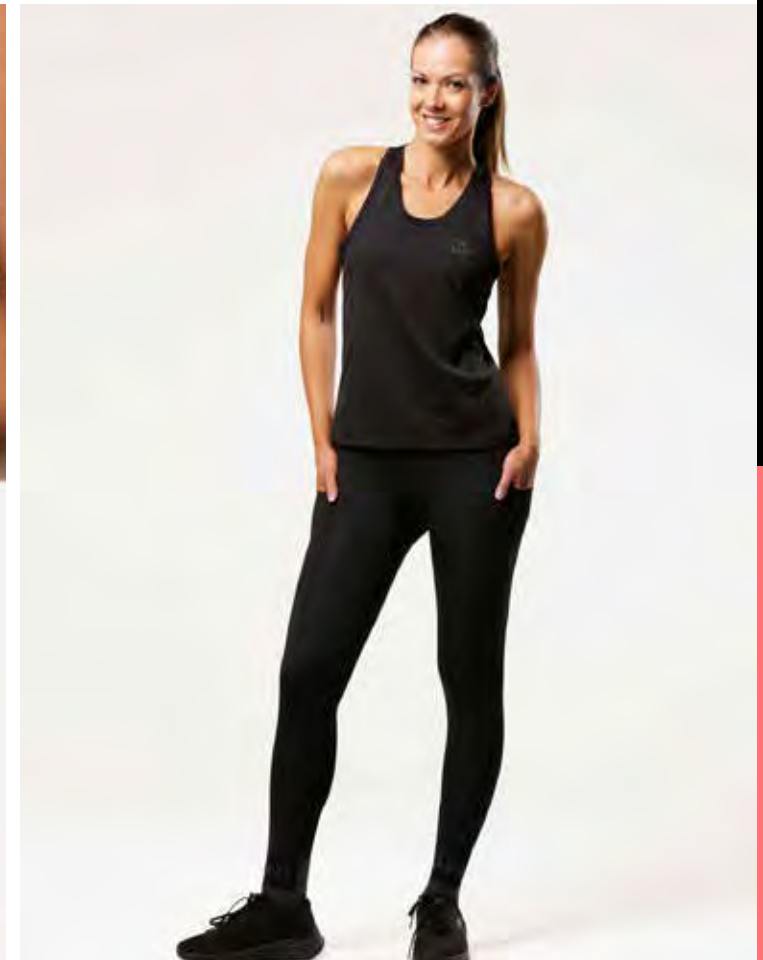
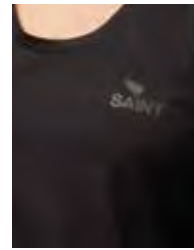
Conquer your fitness goals in comfort and style with this versatile racer back tank. Made with high filament REPVEVE® recycled polyester yarns, the lightweight and moisture-wicking fabric keeps you fresh and dry during your workout. The racerback design offers full range of motion, ideal for activities like running and yoga. A must-have for any active wardrobe.

FABRIC + TECH

- + Quick drying, high filament 100% Repreve® Recycled polyester yarns that provides maximum moisture management+
- Finished with anti-bacterial technology to keep you fresher for longer
- + Versatile double knit construction fabric that features inner hexagonal mesh to transport sweat away from the skin and disperse moisture on surface
- + Finished with anti-bacterial technology to keep you fresher for longer
- + Racer back design
- + Reflective logos to be seen in all conditions
- + Flat active seams for greater comfort and reduce chafe
- + three needle flatlock seams for greater comfort and reduce chafe

MAIN FABRIC

- + 100% Repreve® Recycled Polyester



CORE-PRO COMPRESSION LONG SLEEVE TOP

6423-SMC

SIZES

S M L XL XXL XXXL

DESCRIPTION

The SA1NT Layers Men's Compression Top features advanced graduated compression fabric, supporting your lower and upper arm muscle groups, and aiding circulation, without compromising movement and flexibility in the torso and upper body.

Three-needle flatlock seams ensure all-day comfort, while the evolved circular knit fabric is lightweight and provides a powerful 15-20mmHg compression with superior shape resilience.

FABRIC + TECH

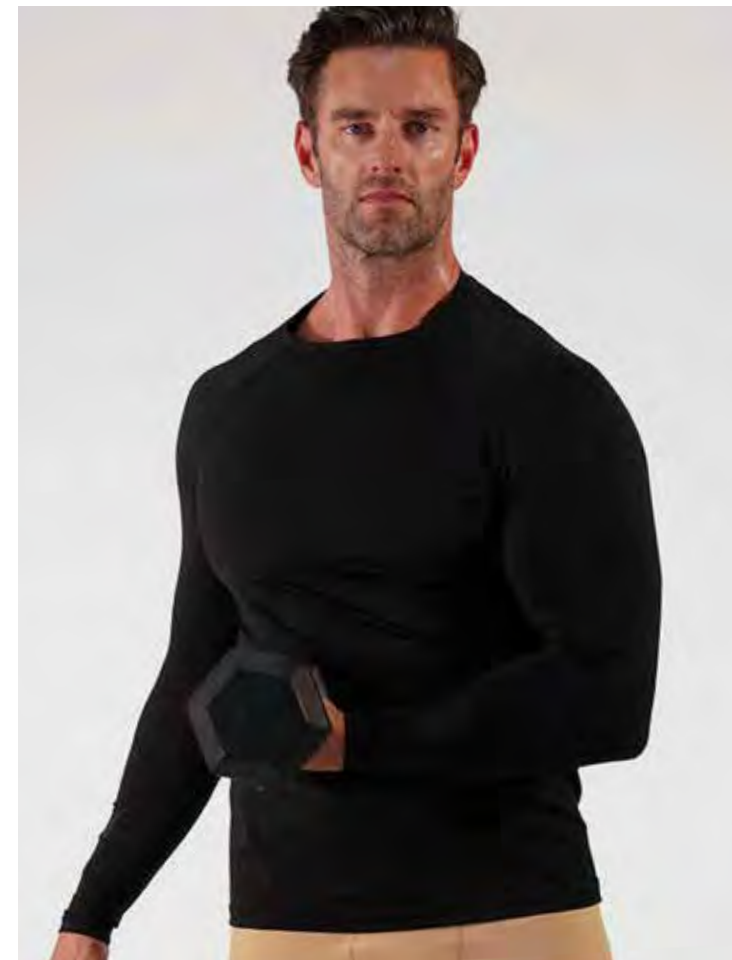
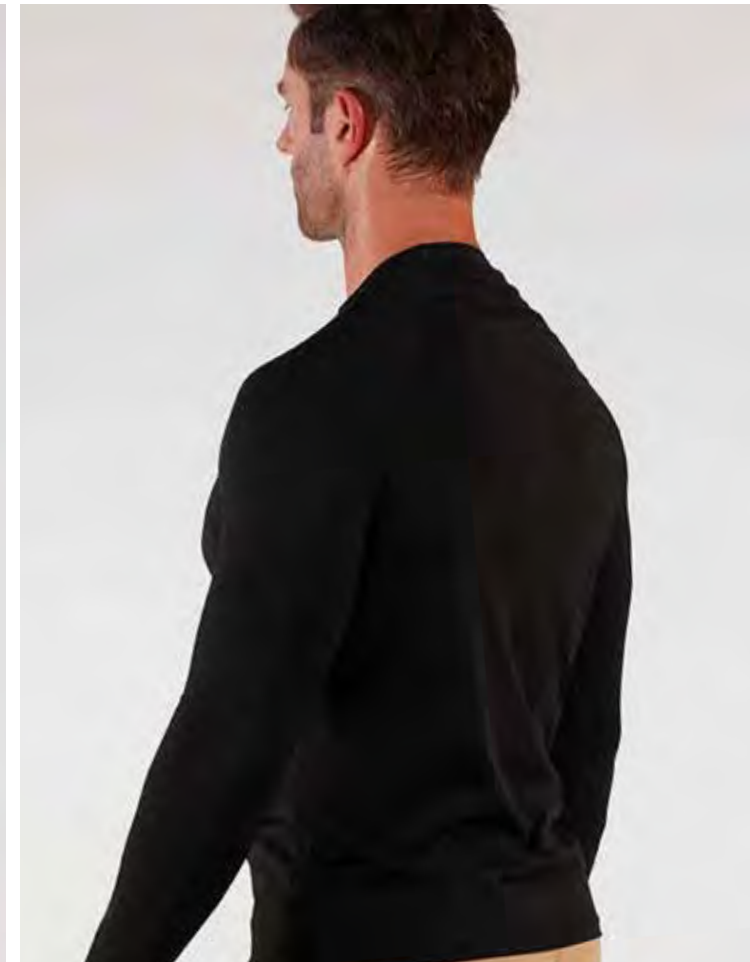
- + 15-20mmHg Graduated Compression targeted on the arms
- + 260gsm evolved circular knit fabric for superior compression properties and shape resilience
- + Great for post exercise recovery and improved circulation
- + Helps reduce muscle oscillation/vibration and fatigue
- + Freedom of motion torso for enhanced performance

BODY FABRIC

- + 70% Nylon 30% Black Spandex

SLEEVE FABRIC

- + 66% Nylon Dope Dyed 34% Elastane



CORE-PRO COMPRESSION LONG SLEEVE TOP

6424-SWG

SIZES

XS S M L XL XXL

DESCRIPTION

The SA1NT Layers Women's Compression Top features advanced graduated compression fabric, supporting your lower and upper arm muscle groups, and aiding circulation, without compromising movement and flexibility in the torso and upper body. Three-needle flatlock seams ensure all-day comfort, while the evolved circular knit fabric is lightweight and provides a powerful 15-20mmHg compression with superior shape resilience.

FABRIC + TECH

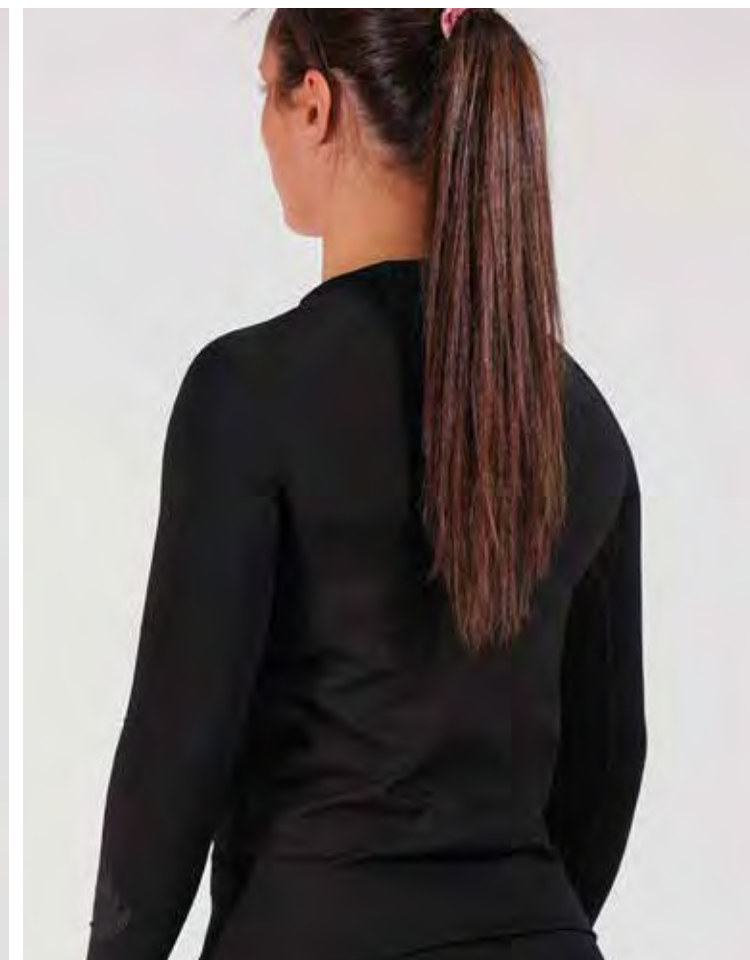
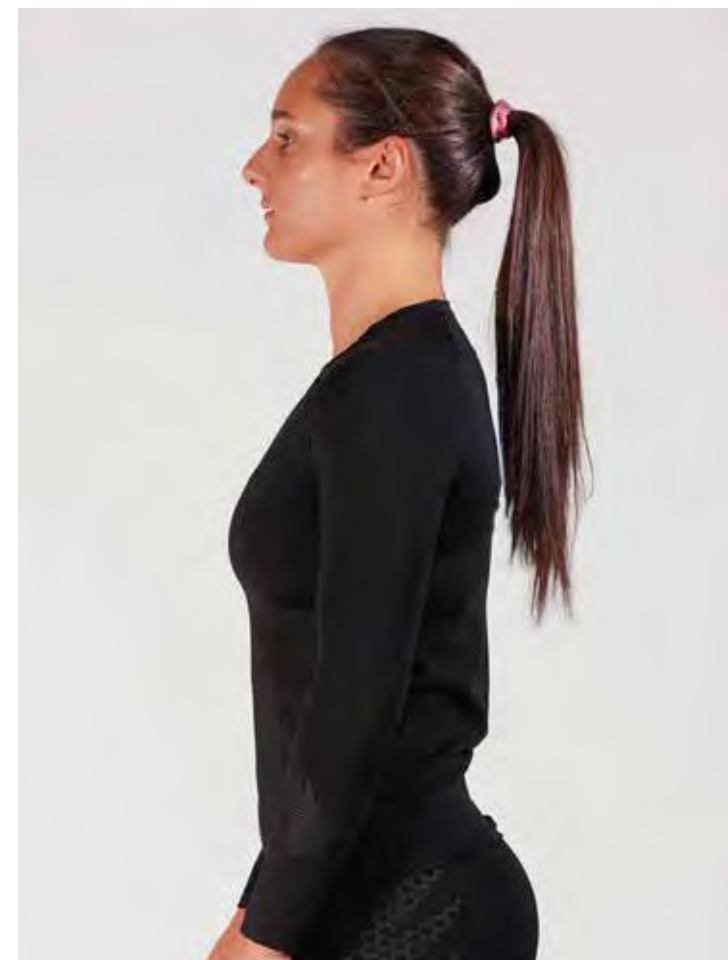
- + 15-20mmHg Graduated Compression targeted on the arms
- + 260gsm evolved circular knit fabric on the arms for superior compression properties and shape resilience
- + Great for post exercise recovery and improved circulation
- + Helps reduce muscle oscillation/vibration and fatigue
- + Freedom of motion torso for enhanced performance

BODY FABRIC

- + 70% Nylon 30% Black Spandex

SLEEVE FABRIC

- + 66% Nylon Dope Dyed 34% Elastane



CORE-PRO COMPRESSION ARM GUARDS

6445-SUA

SIZES

S M L XL

DESCRIPTION

The SA1NT compression arm guards are the slimline companion to our Compression Arm Sleeves, designed to be worn comfortably in all conditions. The 15-20mmHg graduated compression supports blood flow and circulation in the arms. As well as supporting and stabilising the forearm, elbow and biceps, after soft tissue injuries including muscle or tendon strains and ligament sprains.

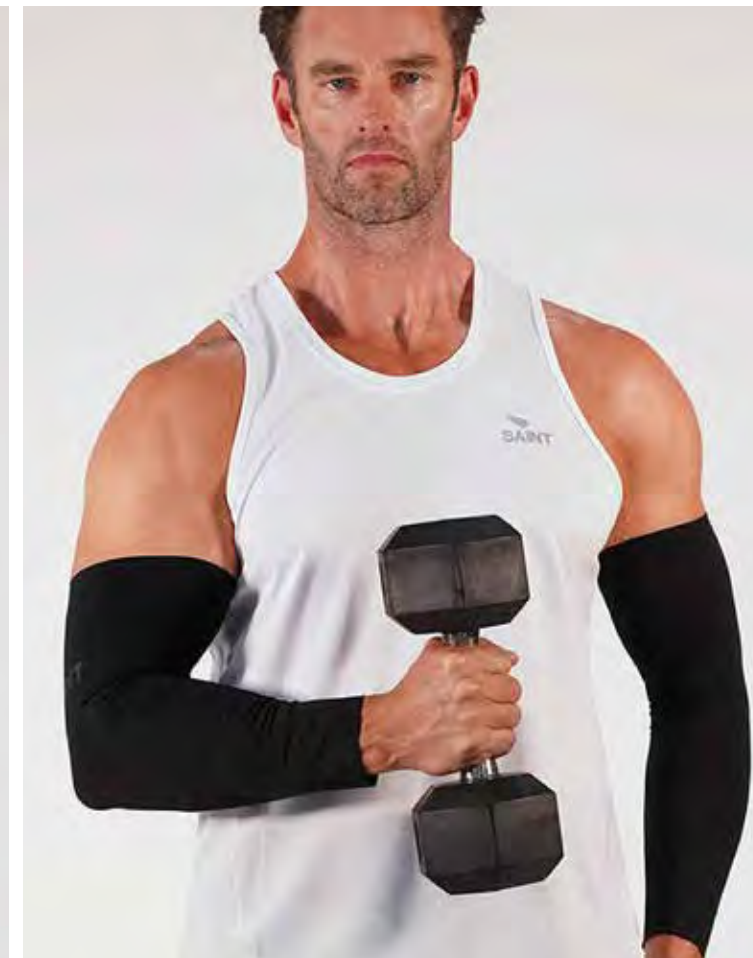
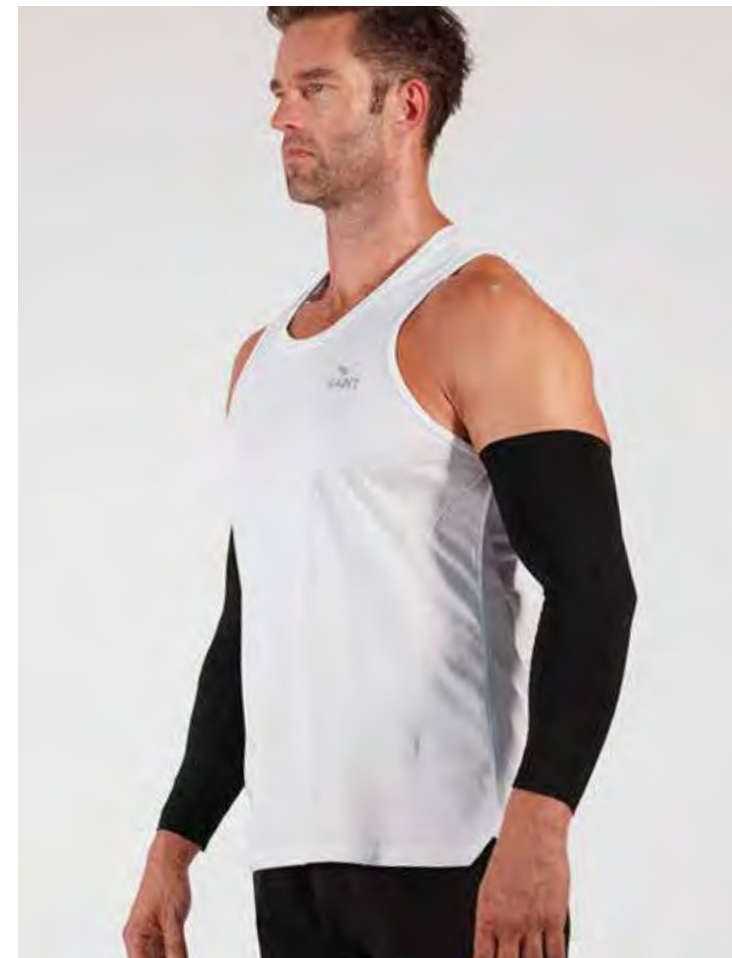
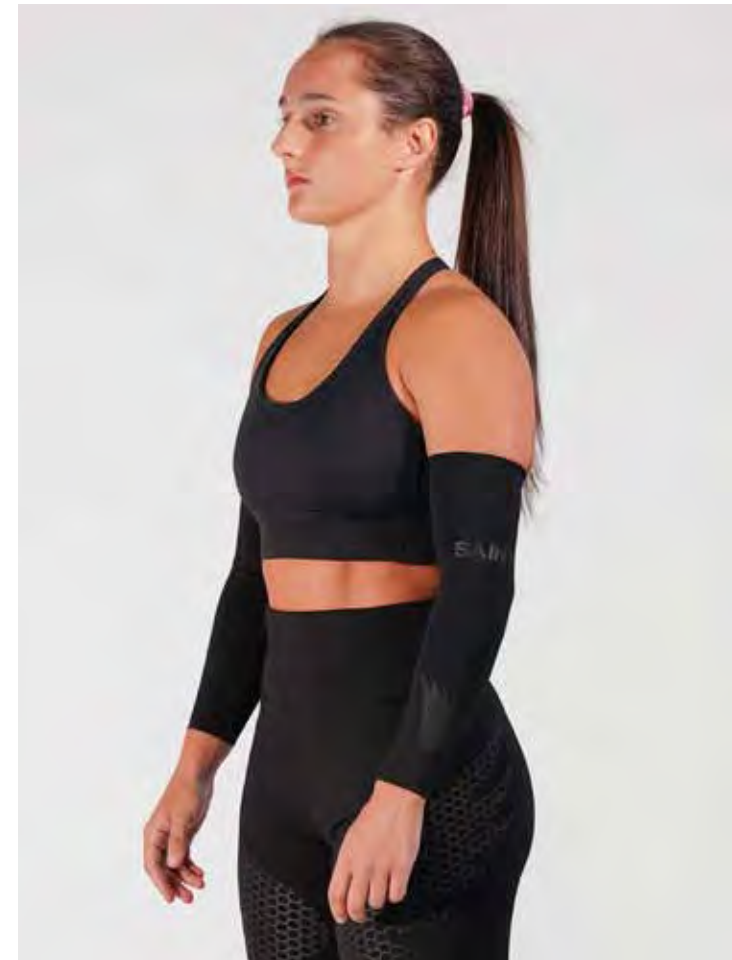
Created with bonded and flocked hems, the compression arm guard is perfect for nearly any sport, particularly endurance training, archery, tennis, cardio exercises or distance sports like running, cycling or swimming.

FABRIC + TECH

- + 15-20 MMHG Medical grade Graduated Compression
- + Great for post exercise recovery and improved circulation
- + Helps reduce muscle oscillation/vibration and fatigue
- + SA1NT Wing Flocked print gripper for secure fit

MAIN FABRIC

- + 66% Nylon Doped Dyed 34% Elastane



CORE-PRO COMPRESSION CALF GUARDS

6444-SUA

SIZES

XS S M L XL

DESCRIPTION

The SA1NT compression calf guards are the slimline companion to our Compression Calf Sleeves, designed to be worn comfortably underneath sports socks and shin guards. The 15-20mmHg graduated compression supports blood flow and circulation in the calf and lower leg. Perfect for supporting and stabilizing the lower leg muscles, after soft tissue injuries including muscle or tendon strains and ligament sprains.

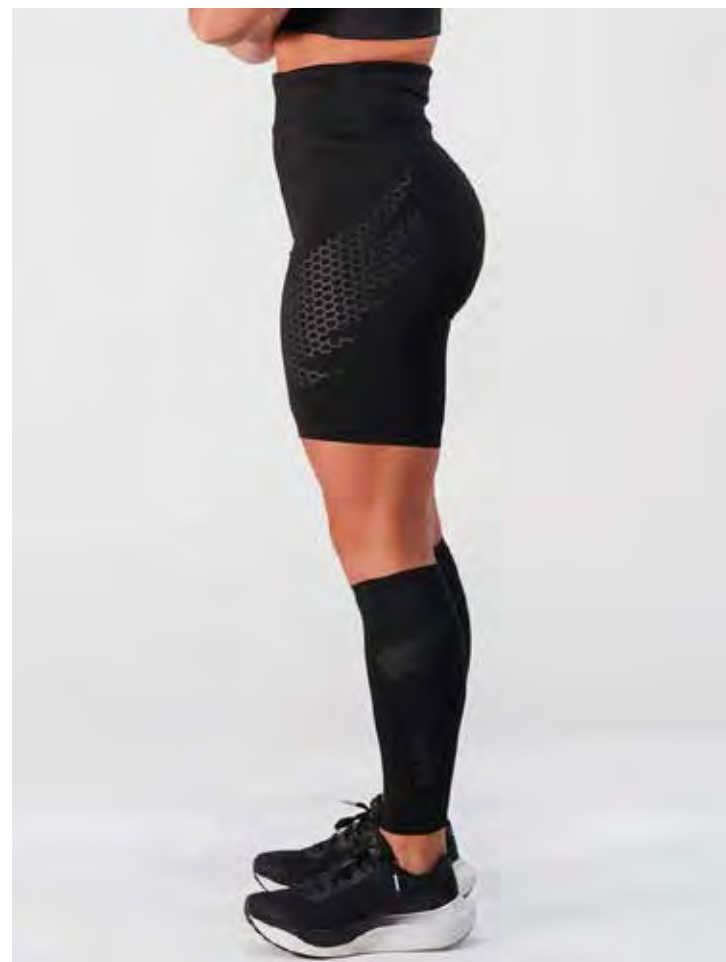
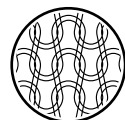
Created with bonded and flocked hems, the compression calf guard is perfect for nearly any sport, particularly endurance training, archery, tennis, cardio exercises or distance sports like running, cycling or swimming.

FABRIC + TECH

- + 15-20 MMHG Medical grade Graduated Compression
- + 260gsm evolved circular knit fabric for superior compression properties and shape resilience
- + Great for post exercise recovery and improved circulation
- + Helps reduce muscle oscillation/vibration and fatigue
- + SA1NT Wing Flocked print gripper for secure fit

MAIN FABRIC

- + 66% Nylon Doped Dyed 34% Elastane



ACCESSORIES

[2025/ 2026]

CORE ACCESSORY RANGE DESIGNED TO COVER
ALL TYPES OF TRAINING - FROM THE GYM TO
THE TRACK TO THE COURT.

SUPPORT CREW SOCK

6355-SUA

SIZES

XS S M L XL

DESCRIPTION

Our run sock sets the standard for runners seeking ultimate comfort and support. Specifically designed with your needs in mind, it allows you to focus solely on your performance, free from concerns about your feet.

Whether you're training for a marathon or enjoying a casual jog, our run sock seamlessly combines comfort and support. Crafted with premium materials and featuring moisture-wicking properties, targeted padding, and a figure 8 compression design that supports your arch and ankle, our run sock is the top choice for any runner seeking enhanced foot comfort and injury prevention. So, why settle for ordinary socks when you can indulge in the pinnacle of run socks?

FABRIC + TECH

- + 15-20mmhg Medical Grade graduated Compression at the base of the foot
- + SA1NT's figure 8 design to brace and support your ankle and arch
- + Crew length sock
- + Anatomical designed ventilation for increase breathability
- + Antibacterial and cooling yarns to keep your feet cool and dry

MAIN FABRIC

57% Nylon 33% Coolplus 10% Lycra



GYM ANKLE SOCK

6354-SUA

SIZES
XS S M L XL

DESCRIPTION
Specifically designed with your needs in mind, it allows you to focus solely on your performance, free from concerns about your feet. Whether you're training for a marathon or enjoying a casual jog, our ankle sock seamlessly combines comfort and support.

Crafted with premium materials and featuring moisture-wicking properties, targeted padding, and a figure 8 compression design that supports your arch and ankle, our ankle sock is the top choice for any runner seeking enhanced foot comfort and injury prevention. So, why settle for ordinary socks when you can indulge in the pinnacle of training and run socks?

- FABRIC + TECH**
- + Moisture-wicking fabric
 - + SA1NT's figure 8 design to brace and support your ankle and arch
 - + Targeted padding to enhance comfort
 - + Ankle length sock

MAIN FABRIC
57% Nylon 33% Coolplus 10% Lycra



BAMBOO CREW SOCK

6543-SUA

SIZES

ONE SIZE

DESCRIPTION

The SA1NT bamboo crew socks are lightweight, breathable, anti-bacterial and moisture wicking. Thick terry on heels and toes for all-day comfort. The new icons.

FABRIC + TECH

- + Bamboo and elastane
- + Crew length
- + Thick terry on heel and toe for comfort
- + All day comfort
- + Sa1nt logo on ribbing
- + Sa1nt wing motif on ankle
- + All weather moisture wicking

MAIN FABRIC

- + 92% Bamboo 8% Spandex



RUN CAP

6356-SUA

SIZES

ONE SIZE

DESCRIPTION

Shield yourself from the sun while maintaining a cool demeanour with SA1NT's lightweight and quick-drying run cap. Regardless of the weather, this cap ensures your comfort and focus during your runs. Its perforated wing details enhance ventilation, while the Velcro back closure provides a customizable and secure fit. With our run cap, you can stay protected and focused on your performance, regardless of the prevailing conditions.

FABRIC + TECH

- + lightweight and quick dry fabric
- + semi-curved brim
- + Perforated Ventilation detail
- + back velcro closure

MAIN FABRIC

- + 100% Nylon





CHAMPIONS
ARE NOT
MADE IN
THE GLARE
OF PUBLICITY
BUT OFTEN
IN SOLITUDE

UNBREAKABLE HUMAN SPIRIT