

# Rail & Spa!

# Arima Onsen

# Taikou-no-yu

# Package Tickets

Hankyu Ver.  
Hanshin Ver.



Enjoy Arima Onsen, Japan's oldest celebrated spa!  
Great value packages, including admission for a rich range of bathing at Taikou-no-yu,  
along with rail access to Arima Onsen!

**Exclusive for Overseas Tourists!**

2014 Version  
[On sale] October 1 (wed), 2014 - March 31 (tue), 2015  
[Valid for] October 1 (wed), 2014 - April 30 (thu), 2015

Not valid for use: Jan. 1 (Thu, national holiday) - Jan. 3 (Sat), 2015  
Spa facilities closed: Jan. 14 (Wed), 2015  
(Apr. 2015 closure dates pending)

Choose between **Hankyu Ver.** and **Hanshin Ver.**  
Unlimited one-day passes on either railway.

Prices as of October 1, 2014

**Hankyu Ver.**  
(Adults Only) **¥2,700**

Roundtrip from Kawaramachi (on weekends/holidays) ¥5,260 **¥2,560 savings**

Roundtrip from Hankyu Umeda (on weekends/holidays) ¥4,620 **¥1,920 savings**

**Hanshin Ver.**  
(Adults Only) **¥2,500**

Roundtrip from Osaka-Namba (on weekends/holidays) ¥4,800 **¥2,300 savings**

**Hankyu All lines**  
Osaka/Kyoto Area - Kobe - Shinkaichi

**Hanshin All lines**  
Namba/Osaka Area - Kobe - Shinkaichi

**Kobe Electric Railway**  
Shinkaichi - Arima Onsen

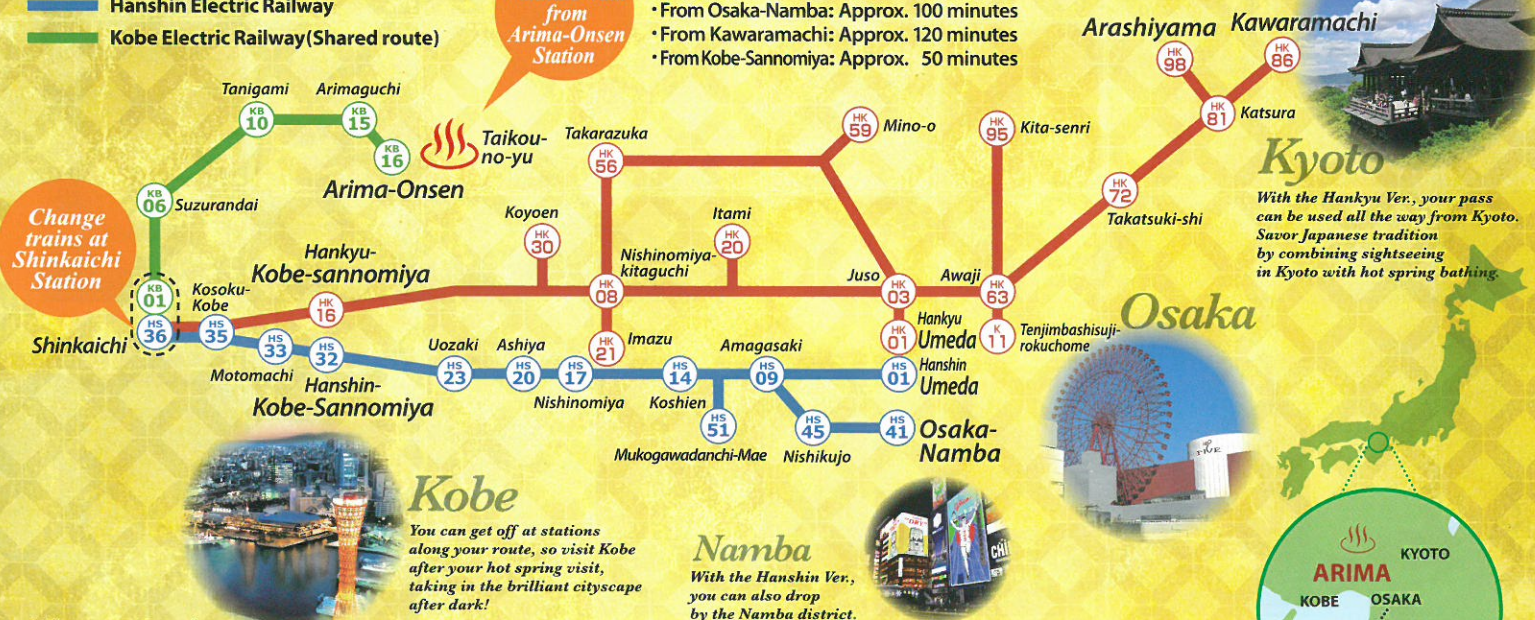
**Arima Onsen Taikou-no-yu admission ticket**

## Access

- Hankyu Railway
- Hanshin Electric Railway
- Kobe Electric Railway (Shared route)

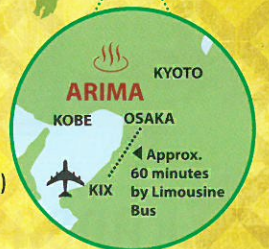
Approx. 7-minute walk from Arima-Onsen Station

- Travel time to Arima-Onsen Station
- From Umeda : Approx. 80 minutes
  - From Osaka-Namba: Approx. 100 minutes
  - From Kawaramachi: Approx. 120 minutes
  - From Kobe-Sannomiya: Approx. 50 minutes



## Where to Purchase

- Overseas travel agencies
- Kansai International Airport Travel Desk
- Hankyu Tourist Center, Osaka-Umeda (Hankyu Umeda Station)
- Hankyu Tourist Information Center, Kyoto (Hankyu Kawaramachi Station) [Hankyu Ver. only]
- Hanshin Electric Railway Service Center (Hanshin Kobe-Sannomiya Station) [Hanshin Ver. only]





歴史探訪  
有馬温泉

# 太閤の湯

## Arima Onsen Taikou-no-yu

Hours: 10:00 a.m. – 11:00 p.m. (last admission 10:00 p.m.)

### Open-Air Bath Zone

Take pleasure in the "Taikou Rock Bath" where the free-flowing hot spring waters of the Kinsen "Gold Spa" have been restored for the first time in 411 years, the Ginsen "Silver Spa," a carbonated spring (man-made), and herbal bathing. Also captivating is the luxurious open-air stone sauna and footbath, offering the delights of Japan's first "bedrock bathing and footbath" at the very same time!



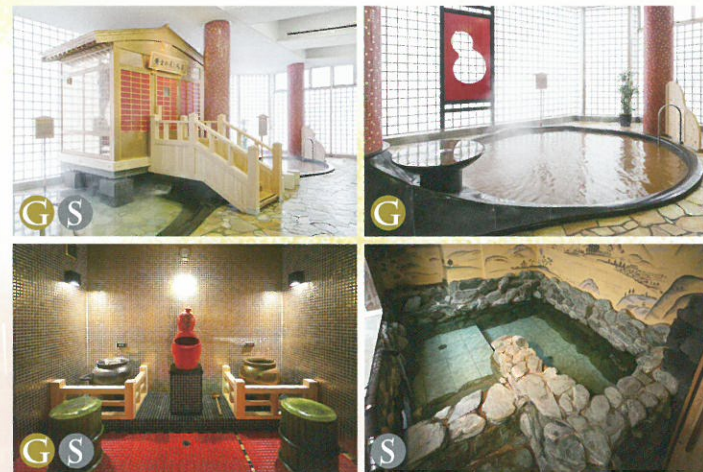
Twenty-six different types of baths and "bedrock bathing"—a facility to savor the Kinsen (Gold) and Ginsen (Silver) waters that make Arima Onsen so special.

**G Kinsen:**  
Gold Darkish-red spa waters rich in iron content. High in thermal insulation and moisturizing effects, with wide-ranging therapeutic properties.

**S Ginsen:**  
Silver In direct contrast to Kinsen, the waters here are silky and translucent. Effects include accelerated metabolism and stimulated appetite.

### Grand Bath Zone

A Japan first! Showcasing the "Golden Steam Bath," where you can simultaneously enjoy the steam from both the Kinsen and Ginsen spring sources.



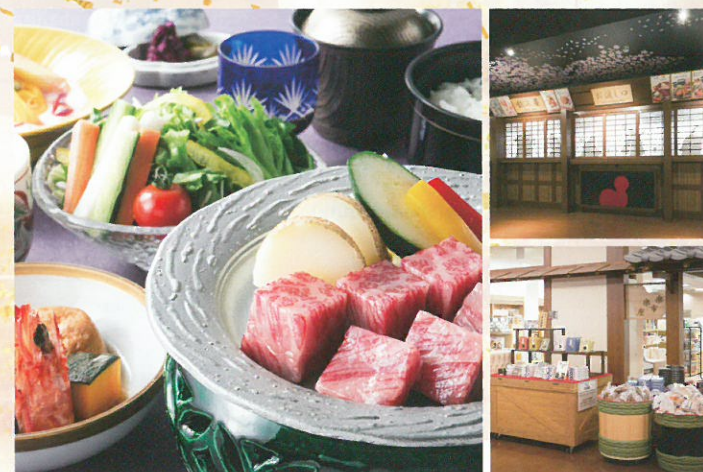
### Kinsen and Ginsen Steam Bath Stone Sauna Zone

This steam bath stone sauna, where both Kinsen and Ginsen spa waters are transformed into steam flows, is truly unique to Taikou-no-yu. Donning the special stone sauna robes, both genders can relax together.



### Dining and Shopping

The complex contains restaurants, a food court and other dining facilities, together with an amusement arcade, concession stands, a lounge with reclining sofas, and other outstanding guest amenities.



### About the Arima Onsen

