

## Charity Auction of Artworks by 22 Artists “Place in my heart” Exhibition

from Friday November 8, 2024



POLA MUSEUM ANNEX (Ginza, Chuo-ku, Tokyo) is proud to announce that it will hold an exhibition and charity auction, “Place in my heart,” from November 8 (Fri.) to December 1 (Sun.), 2024.

We launched this annual charity auction during the COVID-19 pandemic in 2020 out of a desire to support the healthcare professionals on the front lines of the crisis. Since then, the theme and beneficiaries of the auction have changed to reflect current circumstances and sentiments from year to year. This year will mark our fifth annual auction. Thanks to the growing circle of people who look forward to this event each year, a total of 2,609 people have so far participated, generating a total of 67,446,415 yen in donations to NGOs and other organizations.

On January 1 of this year, a massive earthquake struck the Noto Peninsula. Recently, the damage was compounded by severe flooding, so the need for reconstruction remains urgent. On that New Year's day, so many people in Japan felt compassion for the areas devastated by the quake. The tragedy also reminded them of the preciousness of their own families and hometowns, which are at risk of Japan's recurring natural disasters. We have therefore decided to dedicate this year's exhibition, titled “Place in my heart,” to the theme of “birthplace, hometown, home.”

Each of the 22 supporting artists is creating one original work of art based on the exhibition theme. These works will be on show at the exhibition and available for purchase by means of an online silent auction\*. Drawings will also be offered for sale by lottery. All proceeds from the auction and sale of drawings will be donated to the Noto Peninsula 2024 Earthquake Disaster Relief Fund of the Japanese Red Cross Society. (Online bidding on the auction website is scheduled to start on November 11.)

The diverse expressions of “birthplace, hometown, home” by each artist seem to pose the question, “what security can we find in our hearts and minds?” We hope you take the opportunity to visit the exhibition to explore this theme.

\* A silent auction is an auction without direct competition, in which all bids are privately submitted during a set time period. The highest bid at the end of the period wins the auction.

### || Artists ||

Naho Iino / Masayo Imai / Toshihiko Iwata / Yuka Kashihara / Kengo Kito / Hiraku Suzuki / Kei Takemura / Noritaka Tatehana / Miyuki Tsugami / Hiromine Nakamura / Moe Nakamura / Manika Nagare / Yuji Nishijima / Tetsuya Noguchi / Yuko Higuchi / Risa Fukui / Sebastian Masuda / Rina Mizuno / Mai Miyake / Miyuki Yokomizo / Ryu Itadani / Osamu Watanabe \*Japanese Syllabary order

Title of the works from left : Tetsuya Noguchi “RING AND MAN” 2024, Mixed media / Moe Nakamura “sprouts of spring” 2022, Oil on camphor wood / Yuko Higuchi “Spring” 2022, Handmade Japanese paper, watercolor and pen/ Rina Mizuno “Warm Sunny Day” 2022, Oil on canvas

## General information

### ■Exhibition

Title	Place in my heart
Exhibition term	November 8 (Fri.) to December 1 (Sun.), 2024
Hours	11 a.m. to 7 p.m. (last entry 6:30 p.m.) *Open every day of exhibition period.
Venue	POLA MUSEUM ANNEX
Address	POLA Ginza Building 3F, 1-7-7 Ginza, Chuo-ku, Tokyo 104-0061
Admission	Free

### ■Auction and lottery sales

Term (JST)	November 11(Mon.), 2024 at 11:00 a.m. to December 1(Sun.), 2024 at 23:59 p.m.
Organizer	POLA ORBIS HOLDINGS INC.
General inquiries	050-5541-8600 (Hello Dial, only within Japan) <a href="https://www.po-holdings.co.jp/m-annex/en/">https://www.po-holdings.co.jp/m-annex/en/</a>

## Press Contact

POLA MUSEUM ANNEX

Office: info-annex@po-holdings.co.jp

Tel: +81-(0)3-3563-5540 / Fax: +81-(0)3-3563-5543

Press release and images are available from below URL:

<https://pogp.box.com/s/8fxdtgt0w4qaqnx4hyq1fcayl9z70kj>

\*These are available for press use following condition:

- Should you use photos, add credit and caption. It's not allowed to crop the photo and text over the photo.
- Submit a manuscript of the proposed document to us for proofreading before publication.
- Send us a copy of the publication (paper), URL, DVD, CD, etc. for our archives.

Thank you for your cooperation and understanding!

## || Artists Profile ||

\*The pictured works, with some exceptions, are past works, included for reference.  
The exhibition will feature new works by each artist.

### Naho Iino

Born in 1967 in Toyako Onsen, Hokkaido and raised in Yotsuya, Tokyo, Japan. After graduating from the Department of Sculpture at Musashino Art University, she studied at Pilchuck Glass School in Seattle. As an artist, she creates lamps, chandeliers, and other sculptures that utilize light, with a focus on creative objets d'art. She also produces chandeliers for homes, stores, and museums in Japan and abroad. She hand-blows all her works herself, to highlight the delicacy of glass and the warmth of handmade work.

<https://www.naho-glass.com/>



A Hundred Reflections of Shinjuku  
2024, Glass

### Masayo Imai

Creator of teddy bears and stuffed animals. She began creating in 1999 with the release of teddy bears created using ball joints and felt. Participated in the creation of stuffed animals for the picture book Gustave (Hakusensha). Her written works include Cacao Car Racing (Graphic-sha) and Teddy Bear Works Imai Masayo (Boris Bunko).

<https://www.instagram.com/uritouran>



"Kissing under the mistletoe"  
2020,

Wool material, synthetic cotton, hardboard joints, etc. Eyeball pottery (painting cooperation: Yuko Higuchi)

## Toshihiko Iwata

Born in 1970 in Kanagawa, Japan. He graduated in 1999 from Tokyo National University of the Arts, where he studied Japanese lacquer arts. He creates works that blend contemporary sensibilities with traditional lacquer techniques to produce expressions unbound by preconceived notions. They include his Flat Panel series, depicting motifs such as geometric lines and patterns, animals and plants, and family crests, and his Dialogue series of works that are guided to completion through dialogue with lacquer materials.

He worked on the creation of large-scale flat works at Four Seasons Hotel Osaka from 2023 to 2024. His major exhibitions include MICA2022, Gallery Ecu no Mori (2022), U HOPE, Courtyard HIROO (2021), Authentic Aesthetic, Beni Museum, Isetan Honten (2020), and THIS IS NOW, ANA Intercontinental Hotel Tokyo (2020).

[https://www.instagram.com/iwata\\_toshihiko](https://www.instagram.com/iwata_toshihiko)



Dialogue series, "square plate"  
2024  
lacquer, wood, and other materials

## Yuka Kashihara

Born in 1980 in Hiroshima, Japan. After studying Japanese painting at Musashino Art University, she relocated to Germany in 2006. In 2013, she graduated with a master's degree from the Academy of Fine Arts Leipzig, and in 2015 she earned the academic degree of Meisterschueler from the same institution. After returning to Japan in 2022, she is currently based in Tokyo. Using thinly dissolved oil paints, as in the technique of Japanese-style painting, and employing deep colors created with tempera and acrylics, she creates vivid worlds that throng with life, in which transparency and density seem to coexist. In 2012, she exhibited at the VOCA Exhibition, earning an Honorable Mention Award, and she received the Ohara Museum of Art Award. Major solo exhibitions include "First Island - Last Mountain" (Ohara Museum of Art, 2016), "Polar Green" (Tomio Koyama Gallery, 2019), "1:1" (Pola Museum Annex, 2021), "Yuka Kashihara" (Aquavella Galleries, Palm Beach, US, 2022) and "Pile of Signs" (Tomio Koyama Gallery Maebashi, 2024).

<http://tomiokoyamagallery.com/artists/yuka-kashihara/>



"Toru"  
2022, Oil, acrylic on canvas

## Kengo Kito

Born in 1977 in Aichi, Japan. He completed postgraduate studies in oil painting at Kyoto City University of Arts in 2003. Major group exhibitions include "Mono no Aware" (The State Hermitage Museum, Saint Petersburg, 2013), "The Secrets of Techniques" (Takamatsu Art Museum, 2019), "Color and Emotion" (Pola Museum Annex, 2022). Major solo exhibitions include "Multiple Star I, II, and III" (Hara Museum ARC, 2017), "Full Lightness" (Kyoto City Kyocera Museum of Art, 2020), and "Unity on the Hudson" (Hudson River Museum, 2023). He spent a year in New York as part of the reward program for winning the Gotoh Memorial Cultural Award in 2018, followed by a two-year creative sojourn in Berlin. He has won notable acclaim both domestically and internationally for his works that eloquently critique modern society using everyday objects. His works often feature spaces filled with industrial products such as hula-hoops and parasols. More recently, he has created works using fabrics and mirrors to connect and interfere with the light and space of the surrounding environment.

<https://mtkcontemporaryart.com/artist/kito-kengo/>



"cartwheel galaxy"  
2022, acrylic, glitter, glass,  
spray on canvas

## Hiraku Suzuki

Born in 1978. After completing a master's degree in the Department of Intermedia Art of the Graduate School of Fine Arts at Tokyo University of the Arts in 2008, Hiraku Suzuki has participated in residencies in Sydney, São Paulo, London, New York, and Berlin. Focusing on the interconnection between drawing and writing, his artistic practice explores the potentialities of lines in space and time, encompassing two-dimensional works, sculpture, installations, murals, video, and performance.

His major solo exhibitions include "Excavation Today" at The Museum of Modern Art, Gunma (2023). He has also shown in group exhibitions at Museum of Contemporary Art Tokyo (2019-2020); Yinchuan Museum of Contemporary Art, China (2016); Museum of Architecture, Wrocław, Poland (2015); Kunstraum Düsseldorf, Germany (2015); Maison de la culture du Japon à Paris, France (2015); 21st Century Museum of Contemporary Art, Kanazawa, Japan (2012); and Mori Art Museum, Tokyo (2010); as well as various other museums in and outside Japan. He has also collaborated with musicians and poets, and created numerous public artworks. His major publications include "Silver Marker: Drawing as Excavating" (2020, HeHe) and "Drawing: Point and Line and Plane to Tube" (2023, Sayusha). He currently works as an associate professor of Global Art Practice, Graduate School of Fine Arts, Tokyo University of the Arts, and as a visiting professor at The Eugeniusz Geppert Academy of Art and Design in Wrocław, Poland. <http://hirakusuzuki.com/>



"Untitled (Lights) #25"  
2024, Silver ink, blue sumi ink on Japanese

## Kei Takemura

Born in Tokyo in 1975. After graduating from the Department of Painting at the Tokyo University of the Arts with a major in oil painting, she completed a special graduate course in fine arts at the same university. She then ventured overseas to study in Berlin, staying on to live in the city for a period. She currently lives and works in Takasaki, Gunma Prefecture. The installations she creates consist mainly of cloth embroidered with silk thread applied in layers over photos and drawings. The act of embroidery represents the artists' attempt to create a state of "temporariness," as well as a process of reconstructing, as tangible presences, memories, times, and lost things connected with the family home in which the artist lived, and the people intimately associated with her. She is also known for her "Restoration Series" of works made from broken tableware and daily necessities. Major exhibitions include "Before/After" (Hiroshima City Museum of Contemporary Art, 2023), "Home Sweet Home" (The National Museum of Art, Osaka, 2023), "Floating on the River" (The National Museum of Modern Art, Kyoto, 2023) and Yokohama Triennale 2020 (Yokohama Museum of Art, 2020).

<https://www.takaishiigallery.com/jp/archives/4171/>



"Renovated: C.M's Waterlily in 1916"  
2023-2024, Japanese Silkthread,  
Silk Organdy

## Noritaka Tatehana

Born in 1985 in Tokyo, Japan. Studied dyeing and weaving at Tokyo University of the Arts. Well known as the creator of the heel-less shoes worn by Lady Gaga. His works, created by reviewing Japanese cultural elements of the past and redefining them in a modern way, embody a unique perspective and worldview. In recent years, he has also produced paintings and is vigorously engaged in creative collaborations with traditional artisans. His works are found in the permanent collections of the Metropolitan Museum of Art (New York, USA) and the Victoria and Albert Museum (London, UK).

<https://www.noritakatatehana.com>



"Baby Heel-less Shoes,"  
2021, Cowhide, pigskin, dye, crystal glass,  
metal zipper



## Miyuki Tsugami

Born in Tokyo in 1973 and raised in Osaka, Japan. She received a master's degree in fine art from the Kyoto University of the Arts Graduate School. The titles of her works are often prefixed with "View," which means not only objective sights and landscapes but also subjective ways of looking and thinking. The name derives from her thought on questions about contemporary landscape painting that she creates from her essential daily sketches: how people grasp the external world and then construct standards and values from their own perspectives. Her major solo exhibitions include the Ohara Museum of Art, Okayama (2005), the Ichinomiya City Memorial Art Museum of Setsuko Migishi, Aichi (2013), Dominikanerkloster Prenzlau, Germany (2015), The Ueno Royal Museum, Tokyo (2018), and the Nagasaki Prefectural Art Museum, Nagasaki (2019). She also participated in group exhibitions at the Taipei Fine Arts Museum, Taiwan, and the Artizon Museum, Tokyo. Her main collections can be found at the Artizon Museum, Ohara Museum of Art, The National Museum of Art, Osaka, the National Museum of Modern Art, Tokyo, and the Nagasaki Prefectural Art Museum.

<https://miyukitsugami.jp/>



"View, 20 Pieces, 2020-21, No.02, May-Jun 2020"  
2020, Pigment, acrylic, and other materials on canvas,  
©Miyuki Tsugami Courtesy of ANOMALY

## Hiromine Nakamura

Born in 1986 in Fukuoka, Japan. He was born into the fourth generation of a family that has engaged in doll-making for over 100 years. After completing graduate studies at Tokyo University of the Arts, he has worked at creating his own art, even while taking over the family business. Unconstrained by conventional concepts, his works are precise, innovative, and visually captivating. He received the Fukuoka Prefectural Cultural Award of 2023 encouragement division. His works are included in the public collection of the Dazaifu Tenmangu Shrine Treasure Hall.

<https://www.nakamura-ningyo.com/>



"Dragon of Rebirth"  
2023, Ceramic clay, pigment

## Moe Nakamura

Born in 1988 in Tokyo, Japan. She completed her studies in 2012 at the Graduate School of Joshibi University of Art and Design. She typically creates her works by painting with oil on camphor wood, carving the material to produce the forms she seeks. She also blends painting and sculpture, recently working energetically to create two-dimensional works on camphor wood boards. She has continually exhibited numerous works both in Japan and internationally and expanded the scope of her activities. Recent solo exhibitions include "Like a Garden, Like a Home" (Gallery Tsubaki, 2023), "Like a Garden" (Ginza Tsutaya books, 2023), "before the dawn" (Ginza Tsutaya books, 2022), "our whereabouts" (Pola Museum Annex, 2021), "inside us" (Gallery Tsubaki, 2021), and "GROWTH" (Huashan 1914 Creative Park, Taiwan, 2020). Currently, she works in a studio of 10 artists in Kanagawa, Japan.

<https://www.moe-nakamura.com/>



"sprouts of spring"  
2022, Oil on camphor wood

## Manika Nagare

Born in Osaka in 1975 and raised in Kagawa. She explores form in oil paintings with her sense of colors based on traditional Japanese culture and has collaborated in a variety of genres, including artistic supervision of architectural space and dance performances, both in Japan and around the world. She graduated from the department of painting at Joshibi University of Art and Design. She was an overseas artist-in-residence in the US, sponsored by the Agency for Cultural Affairs in 2002, and a recipient of the Pola Art Foundation Grant while residing in the US and Turkey in 2004. Her recent exhibitions include VOCA, The Ueno Royal Museum, Tokyo (2000, 2006), Embracing for Painting, Shiseido Gallery, Tokyo (2015), Takamatsu Contemporary Art Annual vol.05: Visible Scenery, Invisible Scenery, Takamatsu Art Museum (2016), and Spectrum of Vivid Moments, Pola Museum Annex, Tokyo and Nariwa Museum, Okayama (2022). Her work is included in public collections such as Takamatsu Art Museum (Japan), Nerima Art Museum (Japan), Jordan Schnitzer Museum of Art (US), University of Michigan Museum of Art (US), Kocaeli University Museum (Turkey), and more.

<https://manikanagare.com/>



"The Scene I Once Saw"  
2024, Oil on canvas

## Yuji Nishijima

Born in Kanagawa, in 1969, and achieved a masters in fine arts for sculpture at Tokyo University of the Arts in 1995. Taking animals with close ties to myths and legends as his theme, he creates sculptures and installations with twisted copper wire connected together. He moved his base to Gunma in 2021, and established gallery newroll. He began planning Art Fair NAKANOJO in 2024. His major solo exhibit is Zui-Shou — Time Accumulation, at Pola Museum Annex (2023), and his major group exhibits include the Nakanojo Biennale, Gunma (2011 to 2023), the Group Show of Contemporary Artists, Tokyo Metropolitan Art Museum (2021), Akagi SUN do, Gunma (2022), the Pre Biwako Biennale, Nijo Castle, Kyoto (2022), and Fujinoyama Biennale, Shizuoka (2024), among others.

<http://yuji-nishijima.com/>



"makami"  
2021, Copper wire

## Tetsuya Noguchi

Born in 1980 in Kagawa, Japan. In 2005 he completed graduate studies at Hiroshima City University. An artist who constructs a worldview that mixes up historical time and culture, around the theme of armor and humans. His elaborately crafted human figures are simultaneously humorous and poetic. Major showings include the traveling exhibition "Shin Japanese Painting" (Pola Museum of Art, 2023), "THIS IS NOT A SAMURAI" (2021-2022), "Tetsuya Noguchi Exhibition: Historical Odyssey" (Nerima Art Museum, 2014; Asahi Beer Oyamazaki Villa Museum of Art, 2014), and "Medicine and Art: Imagining a Future for Life and Love" (Mori Art Museum, 2009).

<https://gyokuei.tokyo/photo/album/414837>



"RING AND MAN"  
2024, Mixed media

## Yuko Higuchi

Painter

<https://higuchiyuko.com/>



2022, Handmade Japanese paper, watercolor and pen

## Risa Fukui

Born in 1975 in Shizuoka, Japan. Graduated from Tama Art University, specializing in graphic design. With painstaking, descriptive detailing and bold composition based on precise observation, her paper cutting art creates worlds that overwhelm the viewer using lines that seem to possess a vital force. Her creative endeavors have included CD jacket artwork for musician Mika Nakashima, collaborations on Reebok sneakers and UNIQLO UT collections, illustrations and book bindings for novels by Naoki Prize-winning authors Natsuo Kirino and Nobori Kiuchi, video production for NHK's collection of short stories by Osamu Dazai, Good Bye, and the opening titles for NHK's Cat Tail, Frog Hand. She was also responsible for the main visuals for Wa no Kai (2008-2018) organized by the head of the Hosho style of Noh. She has published two picture books, both issued in Kagaku no Tomo by Fukuinkan Shoten Publishers: The World of Insect Sounds (July 2019) and Japanese Larch: The Trees that Make the Forests of Mt. Fuji (November 2022). She is currently participating in the traveling exhibition Sanrio Exhibition - 60 Years of Japan's Kawaii Culture. From 2022, she has participated in the traveling exhibition Seven Japanese Paper-cutting Muses. Her 2024 Elementary School Art Textbook Zugakousaku 1.2 Part 2 "I Found It" (Kairyudo Publishing) is now available. In addition, she is active in a variety of fields, including participating in solo and joint exhibitions both domestically and internationally, and holding workshops.

<http://risafukui.jp/>



"apple blossom"  
2022, Drawing papers, acrylic paint

## Sebastian Masuda

Born in 1970. Resident in New York, USA.

Since the 1990s, he has been active in the worlds of theater and contemporary art. Based in Harajuku, Tokyo, Japan from 1995, he has applied a consistent and unique sense of color to create works in the domains of art, fashion, and entertainment. He created art for musician Kyary Pamyu Pamyu's music video PONPONPON, and served as the art director of KAWAII MONSTER CAFE. His work has contributed to the popularization of Kawaii culture throughout the world. He was appointed a 2017 Japan Cultural Envoy by Japan's Agency for Cultural Affairs, and in 2018, a NYU Arts & Science Visiting Scholar. In 2019 he was listed amongst The 100 Most Respected Japanese People in the World by Newsweek Japan.

<https://sebastianmasuda.com/>



"TRUE COLORS -home- "  
2013/2024, Japanese paper, sea glass, glass beads, gauze, cotton fabric

## Rina Mizuno

Born in 1989 in Aichi, Japan. She aims at creating “paintings in which it is impossible to see all elements at a glance,” based on the expectation that if the artist herself is surprised by a work, the viewer will be even more amazed. Major solo exhibitions include “Atelier Scenery” (Shinjuku Takashimaya, 2023), “Garden” (Roppongi Hills A/D Gallery, 2023), “Unable to See Whole” (Mizuma Art Gallery, 2020), and “Without Thinking, Stopped” (Pola Museum Annex, 2019). Major group shows include “Do Different Cultures Resonate?” (Ohara Museum, 2024), “Position 2021-2022 Nagoya Contemporary Art Exhibition” (Nagoya City Art Museum, 2021-2022). Major awards include Aichi Prefectural Arts Encouragement Prize (2022) and the VOCA Honorable Mention (2015). Her works are found in public collections at Ohara Museum of Art and Aichi Prefectural Museum of Art, and in public art at Mitsubishi Estate and Dai-ichi Life Insurance.

<https://www.rinamizuno.com/>

## Mai Miyake

She studied at the graduate school of Beaux-Arts de Paris.

She creates works that are imbued with a sensibility that has continued since the days of ancient Japan through to modernity. And in addition to paintings, she also creates installations, reliefs, products and short stories. Her major exhibitions include Little Lily - White Lie, at Pola Museum Annex (2013), Heaven Helps Those Who Help Themselves, Pola Museum of Art (2013), Altering Home, 21st Century Museum of Contemporary Art, Kanazawa (2018), BOTANICA, Busan Museum of Art (2018), Tea Ceremony Fascination of Art and Design, Oita Prefectural Art Museum (2018), Butterfly's Dream, Art Sightama 2020 (2020), The Shapes of Words, The Words of Shapes, Kanagawa Kenmin Hall Gallery (2021), Summer Vacation at a Certain Art Museum, Chiba City Museum of Art (2022), Kuroyagi Shiroyagi Tsushin, MtK Contemporary Art (2023), Made in Shiga, Omotesando Crossing Park (2024), and more. Her latest collection is Hansha yin-yang (2022). She is the director of (THISIS)NATURE at Kyoto Takashimaya S.C.[T8], and commissioner at ARTISTS' FAIR KYOTO.

<http://www.maimiyake.com/>

## Miyuki Yokomizo

Born in Tokyo in 1968. Received a BFA from the Department of Sculpture at Tama Art University in 1994. Fellowship of the Agency of Cultural Affairs Program of Overseas Study for Upcoming Artists. Since the 1990s, Yokomizo began presenting light-filled minimalistic installations that use plastics and other familiar objects in Japan and abroad. In recent years, she has been attempting to construct new landscapes by combining installation works and two-dimensional works that reimagine the installation space onto canvas. Major exhibitions include Plastic Age: Art and Design (Museum of Modern Art, Saitama, 1998), Slanting House (Museum of Contemporary Art Tokyo, 2002), Purloined Nature (Kawamura Memorial Museum of Art, 2003), Passage to the Future: Art from a New Generation in Japan organized by the Japan Foundation (World Touring Exhibition, 2004-2019), Landscape: Over the Soft horizon (Pola Museum Annex, 2021), ABSTRACTION: The Genesis and Evolution of Abstract Painting Cézanne, Fauvism, Cubism and on to Today (Artizon Museum, 2023), and among others.

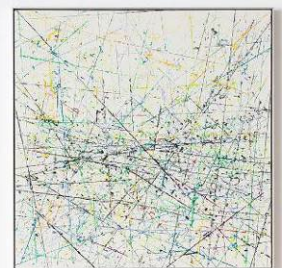
<http://miyukiyokomizo.net/>



“Warm Sunny Day”  
2022, Oil on canvas



“Jump”  
2022,  
Bamboo, ceramic, felt and ear of rice



“landscape S010.006.2022”  
2022, Oil on canvas



## Ryu Itadani

Born in Osaka Japan in 1974, Ryu has also resided in Toronto, Tokyo, and London. He currently lives and works in Berlin. Ryu finds beauty and joy in his simple yet delightful everyday life. Streetscapes of local neighborhoods or the simplicity of stationery in a room share equal relevance in his paintings, which have playful colors and descriptive, unique lines.

<https://ryuitadani.com/>



“Saint-Jean-de-Luz”  
2024, Acrylic on canvas

## Osamu Watanabe

Born in 1980. A contemporary artist who applies techniques of artisanal confectionery to his art, using resin to decorate a wide variety of objects with confectionery. His colorful and sophisticated creams, candies, and fruits that look just like the real thing are drawing attention and creating a buzz both in Japan and internationally. Major exhibitions include “Osamu Watanabe OHARA-DECO” (Ohara Museum of Art, 2012). His work is included in the public collections of Ohara Museum of Art, Kiyosu City Haruhi Art Museum, and Takasaki Museum of Art.

<http://watanabeosamu.tokyo/>



“Spring”  
2022, Modeling paste,  
acrylic paint, resin and FRP