



Japan Waste Co.,Ltd
Postal Code: 612-8244
9-1 Yokooji Senryomatsu-cho, Fushimi-ku, Kyoto City, Kyoto

Japan Waste Kanto Co.,Ltd. Achieves ISCC Plus Certification: A Leap Towards a Sustainable Circular Economy



Japan Waste Co.,Ltd., headquartered in Fushimi-ku, Kyoto City, has proudly announced its attainment of the International Sustainability & Carbon Certification (ISCC) for its Kanto Factory in Kawagoe City, Saitama Prefecture. This globally recognized certification highlights the company's dedication to spearheading sustainable practices within the plastics industry.

The ISCC, a certification system addressing sustainability and greenhouse gas emissions, sets the standard for chemical recycling. Japan Waste Co.,Ltd., renowned for its comprehensive recycling operations, oversees the entire lifecycle—from waste plastics and paper collection to the production of Refuse Paper and Plastic Fuel (RPF). Importantly, a segment of the RPF is designated for chemical recycling through advanced gasification techniques.

With a diverse clientele of brand owners, Japan Waste Co.,Ltd. is strategically positioned to advocate for a circular approach, redirecting waste plastics to chemical manufacturers primed for chemical recycling. The recent ISCC Plus certification stands as a testament to this dedication.

Waste and processing residues

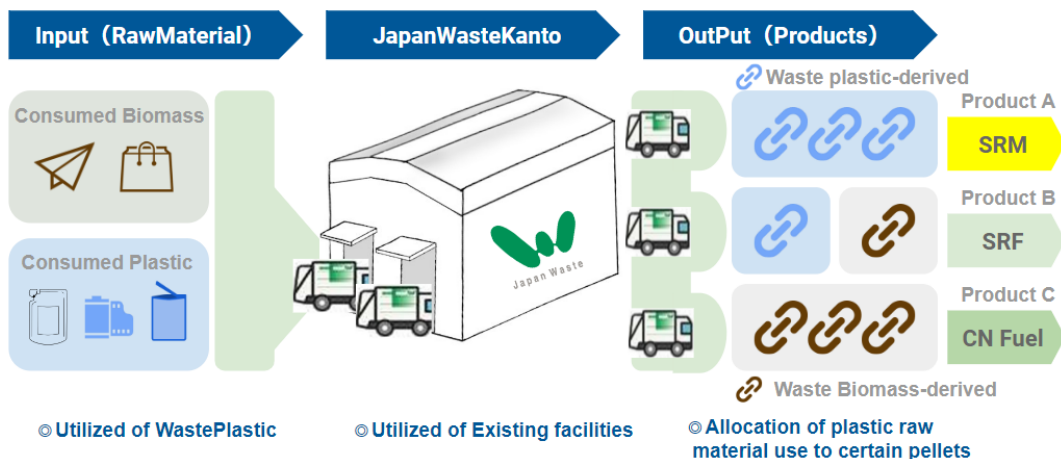


The certification secured by Japan Waste encompasses the Point of Origin, Collecting Point, and Plastic Waste Processor. A standout feature of the company is its unique collection service, bolstered by its dedicated fleet of trucks. This holistic service guarantees the smooth transportation of raw materials from waste-producing entities to the Kanto Factory, and subsequently to chemical recycling plants.

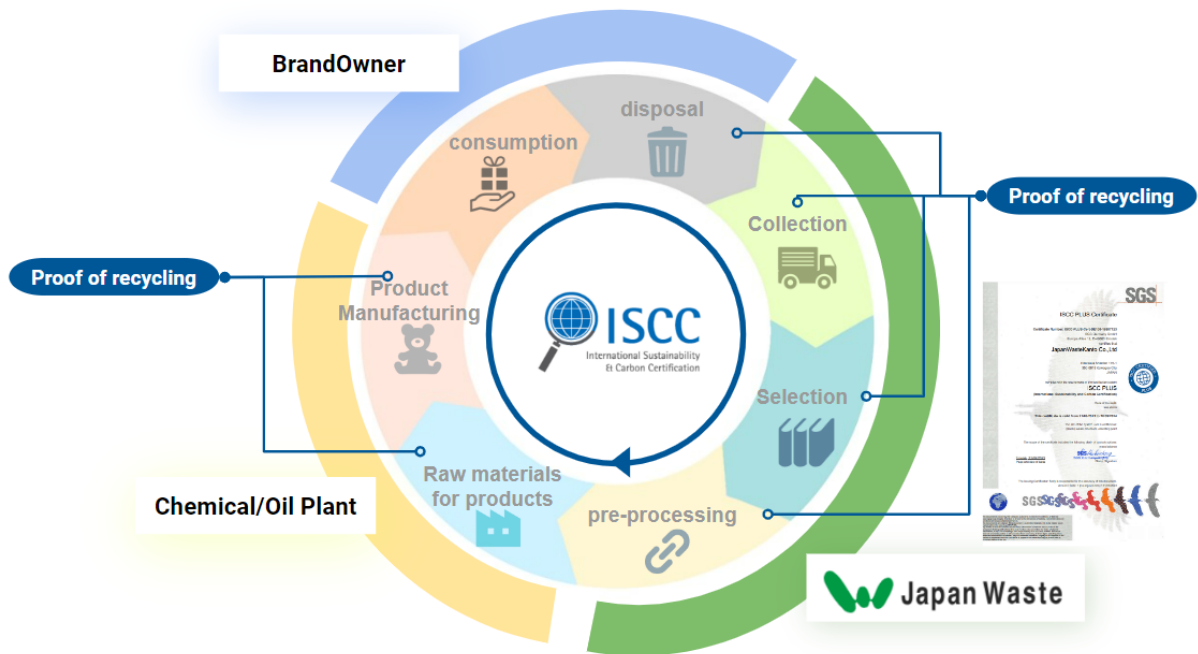
The ISCC Plus employs a mass balance methodology, providing a rigorous system to ascertain the ratio of non-fossil-derived materials, even when mixed with fossil-derived ones. This approach guarantees transparency in tracing the sources of non-fossil-derived materials.



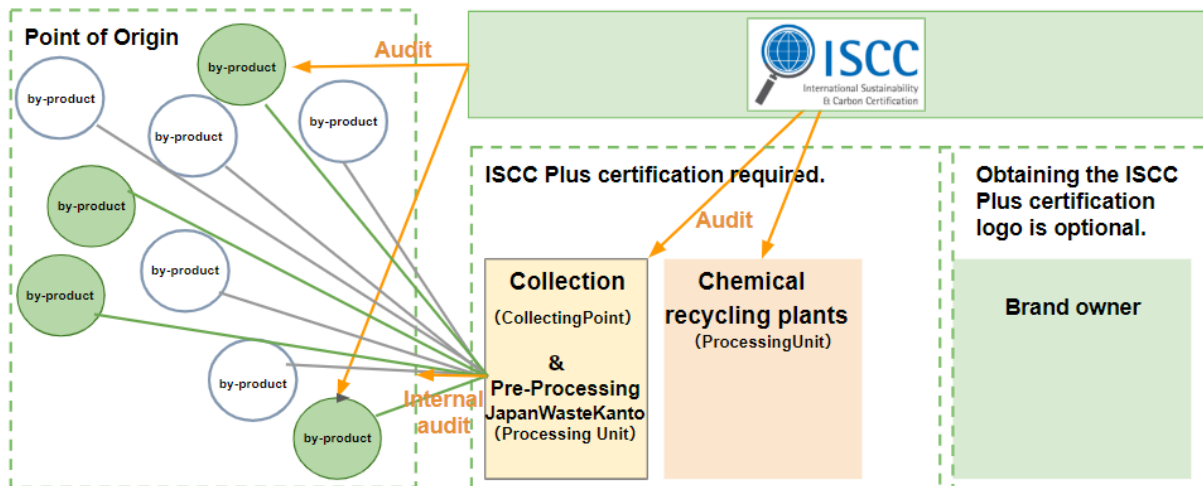
Guided by a sustainability ethos, Japan Waste Co.,Ltd. leads initiatives to repurpose waste plastics. The company's nuanced approach to recycling, particularly with composite materials, emphasizes energy recovery via RPF. By categorizing RPF into Solid Recovered Material (SRM) and Solid Recovered Fuel (SRF), the company customizes its recycling solutions to cater to its clients' unique requirements.



As the sector envisions the continued growth of chemical recycling, capitalizing on oil conversion and catalytic technologies, Japan Waste Co.,Ltd. is unwavering in its commitment to adapt to these innovations. We pledge to amplify our endeavors in material and chemical recycling for resource revitalization. We are geared towards executing the circular processing operations that waste-emitting businesses necessitate.



Japan Waste Co.,Ltd., now ISCC Plus-certified, offers waste-producing businesses the opportunity to register their individual locations as Points Of Origin. This arrangement allows these entities to integrate into the framework without securing their own certification, post a self-declaration and a specific audit. For inquiries about partnering with our company or for audit details, please reach out to our sales team or utilize the inquiry form below.



If you want to know more, Please feel free to ask from the following QR code or URL.
<https://forms.gle/4X69XrLo7TEsdrbz8>



© Japan Waste Group locations

Map

The map shows the locations of the Japan Waste Group facilities across Japan. The facilities are:

- Head Office**: Located in Kyoto.
- Kanto 1st Factory**: Located near Tokyo, 4000mtm capacity.
- Kanto 2nd Factory**: Located near Tokyo, 2000mtm capacity.
- Kyoto 1st Factory**: Located near Osaka, 4200mtm capacity.
- Kyoto 2nd Factory**: Located near Osaka, 2000mtm capacity.
- Tokai Factory**: Located near Nagoya, 4000mtm capacity.



Contact: NAMBU Terutaka
Director Circular Economy
Whatsapp: +817087033042