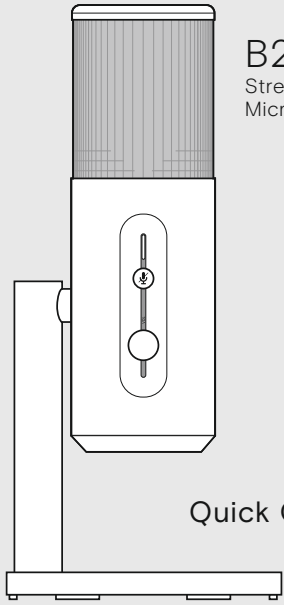


EPOS

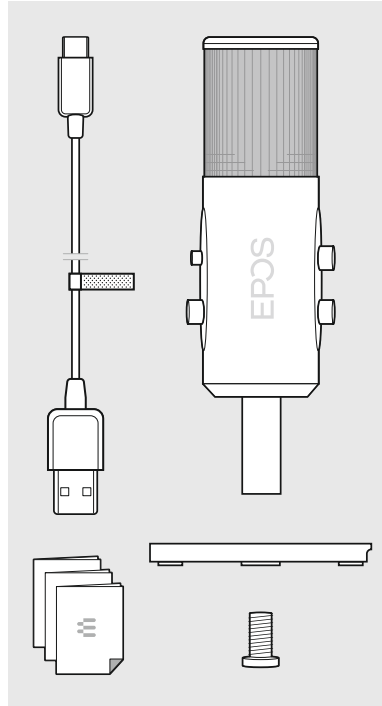
B20
Streaming
Microphone



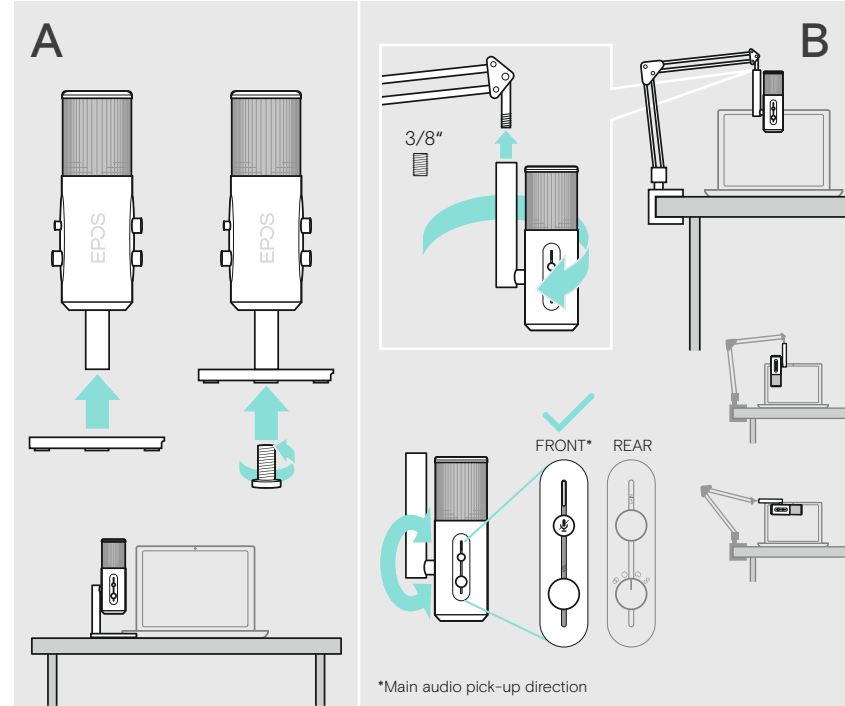
Quick Guide

Model: EPWD2

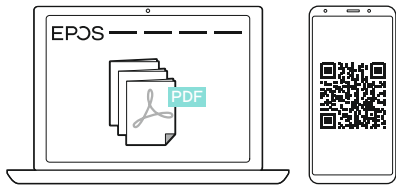
Package contents



Mounting the microphone



More features: User Guide



www.eposaudio.com/gaming/downloads

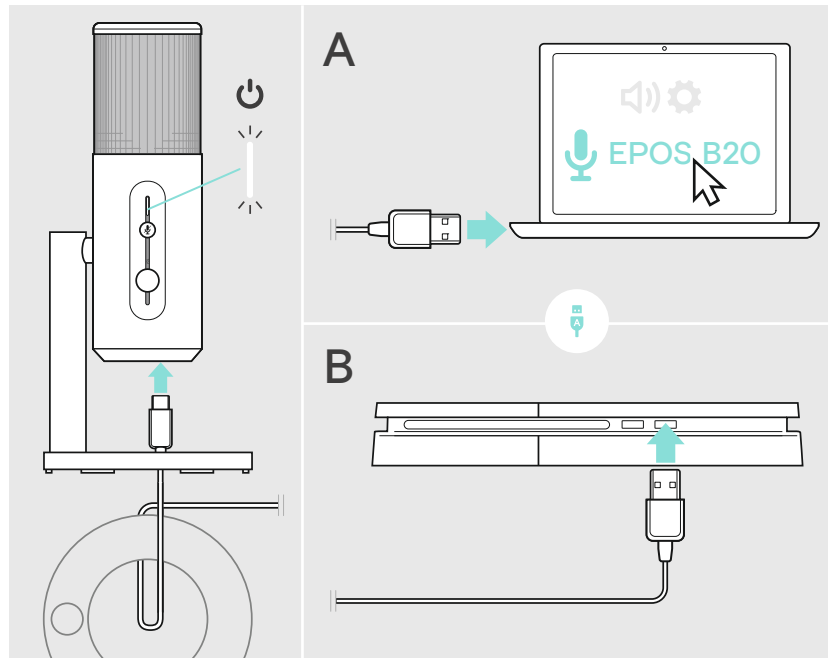
FAQs & support:

www.eposaudio.com/gaming/support

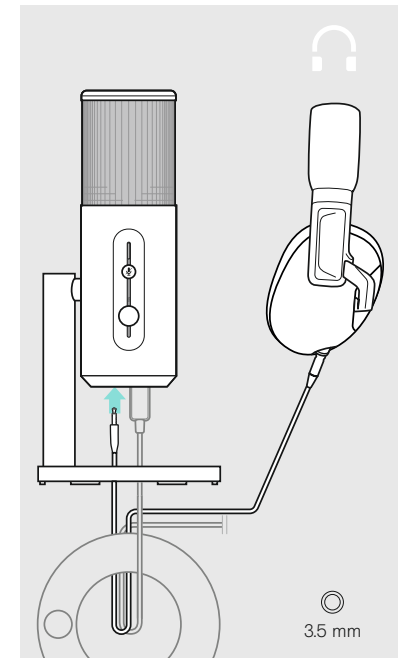
DSEA A/S

Kongebakken 9, DK-2765 Smørum, Denmark
www.eposaudio.com

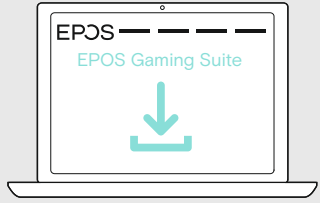
Connecting the B20 to a computer or PS4™



Connecting a headset



Enhance your audio experience

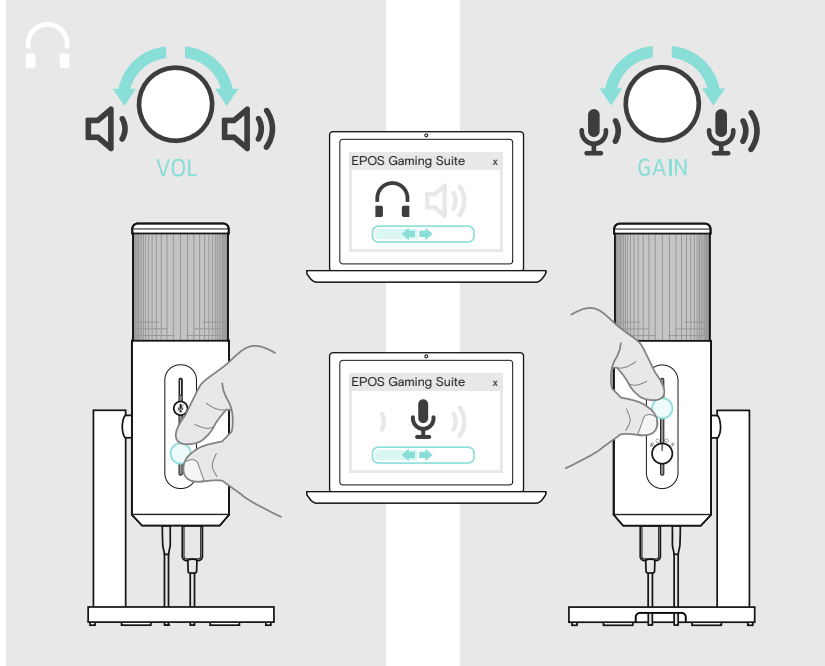


www.eposaudio.com/gaming/downloads

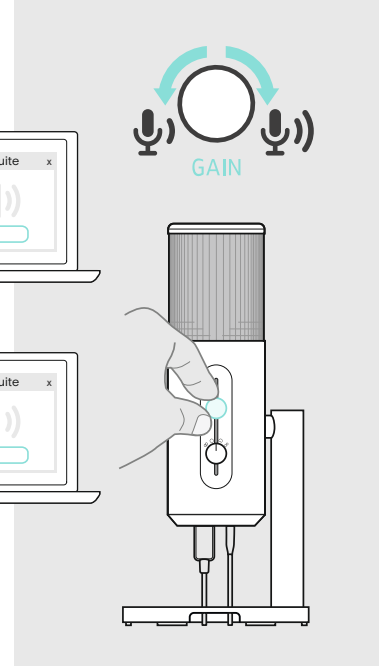


- > Install the EPOS Gaming Suite
- > Customize your sound

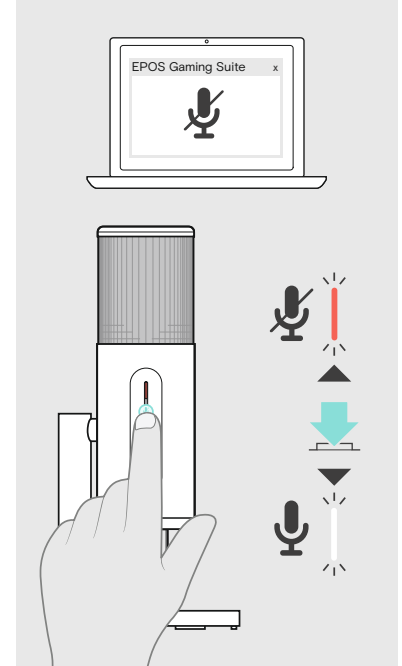
Adjusting the headset volume



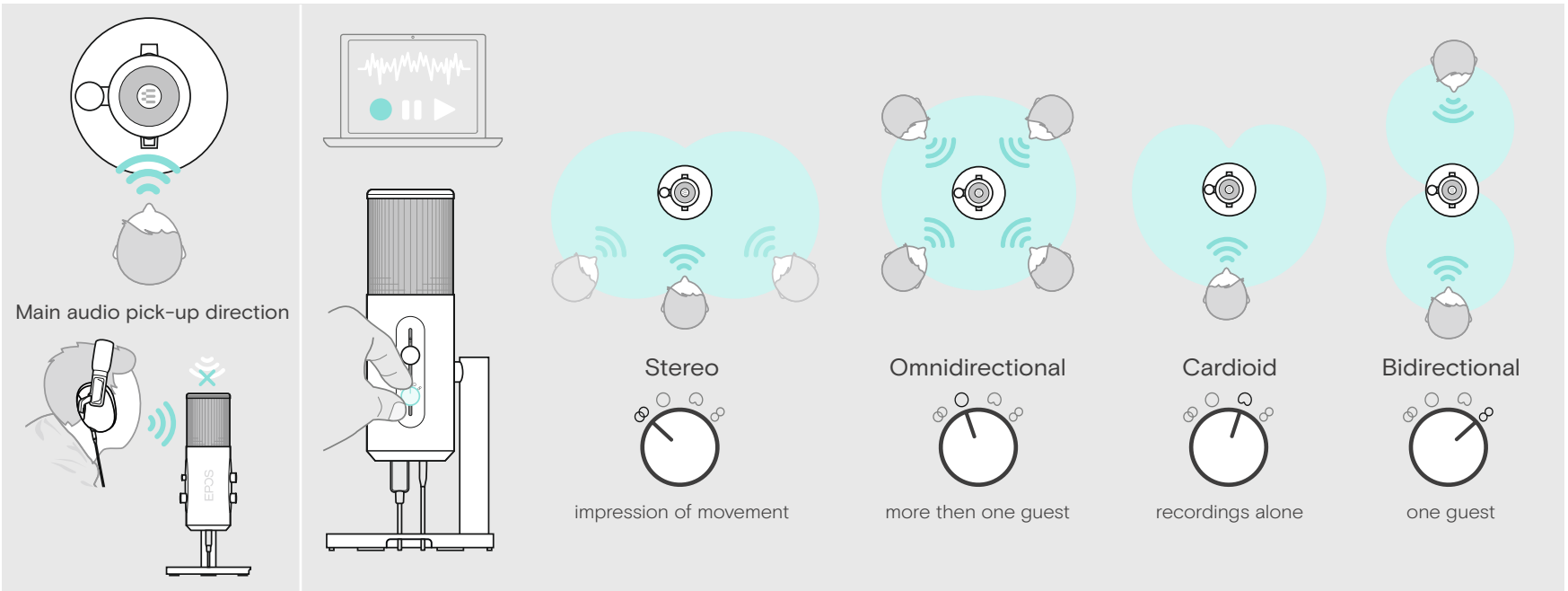
Adjusting the gain

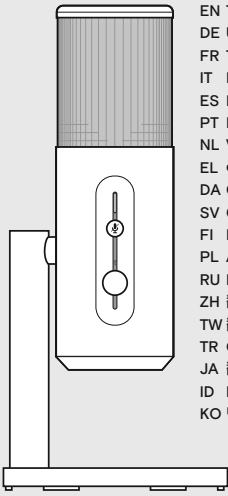


Muting the microphone



Talking into the microphone & Selecting a pick-up pattern

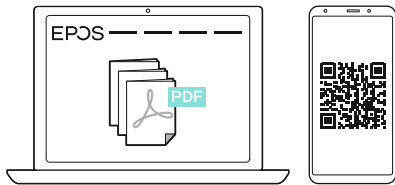




Model: EPW22

EN Translation Sheet
 DE Übersetzungsbeiblatt
 FR Texte à traduire
 IT Foglio di traduzione
 ES Hoja de traducción
 PT Folha de tradução
 NL Vertaling
 EL Φύλλο μετάφρασης
 DA Oversættelsesark
 SV Översättningsblad
 FI Käännöslehti
 PL Arkusz tłumaczenia
 RU Перевод
 ZH 翻译表
 TW 翻譯表格
 TR Çeviri Sayfası
 JA 翻訳シート
 ID Lembar Terjemahan
 KO 번역 시트

More features: User Guide



www.eposaudio.com/gaming/downloads

FAQs & support:

www.eposaudio.com/gaming/support

DSEA A/S

Kongebakken 9, DK-2765 Smørum, Denmark
www.eposaudio.com

EN Quick Guide

Package contents
 Mounting the microphone
 FRONT* | REAR | *Main audio pick-up direction
 Connecting the B20 to a computer or PS4™
 Connecting a headset
 Enhance your audio experience
 > Install the EPOS Gaming suite
 > Customize your sound
 Adjusting the headset volume
 Adjusting the gain
 Muting the microphone
 Talking into the microphone &
 Selecting a pick-up pattern
 Main audio pick-up direction
 Stereo: impression of movement
 Omnidirectional: more than one guest
 Cardioid: recordings alone
 Bidirectional: one guest
 More features: User Guide
 For FAQs & support:
www.eposaudio.com/gaming/support

DE Kurzanleitung

Lieferumfang
 Mikrofon montieren
 VORNE* | HINTEN | *Hauptgesprächsrichtung
 B20 an einen Computer oder
 eine PS4™ anschließen
 Headset anschließen
 Ihr Audioerlebnis verbessern
 > EPOS Gaming Suite installieren
 > Ihren Sound anpassen
 Headset-Lautstärke einstellen
 Verstärkung anpassen
 Mikrofon stummschalten
 In das Mikrofon sprechen &
 Richtcharakteristik auswählen
 Hauptgesprächsrichtung
 Stereo: Eindruck von Bewegung
 Richtungsunabhängig: mehr als ein Gast
 Niere: Aufnahmen alleine
 Beidseitig: ein Gast
 Weitere Features: Bedienungsanleitung
 Für FAQs & Support:
www.eposaudio.com/gaming/support

FR Guide rapide

Contenu de l'emballage
 Montage du micro
 AVANT* | ARRIÈRE | *Principal sens de captation audio
 Connexion du B20 à un ordinateur ou une PS4™
 Branchement d'un micro-casque
 Expérience audio optimisée
 > Installation de l'EPOS Gaming Suite
 > Son personnalisé
 Réglage du volume du micro-casque
 Réglage du gain
 Désactivation du micro
 Utilisation du micro et
 sélection d'une courbe de directivité
 Principal sens de captation audio
 Stéréo : sensation de mouvement
 Omnidirectionnel : plusieurs invités
 Cardioïde : enregistrements uniquement
 Bidirectionnel : un invité
 Fonctionnalités supplémentaires : Guide d'utilisation
 FAQ et assistance :
www.eposaudio.com/gaming/support

IT Guida rapida

Contenuto della confezione
 Montaggio del microfono
 DAVANTI* | DIETRO |
 *Direzione di ricezione audio principale
 Collegamento di B20 a un computer o a PS4™
 Connessione di una cuffia
 Migliora la tua esperienza audio
 > Installa la suite di giochi EPOS
 > Personalizza il tuo suono
 Regolazione del volume delle cuffie
 Regolazione del guadagno
 Disattivazione del microfono
 Uso del microfono e
 selezione di uno schema di ricezione
 Direzione di ricezione audio principale
 Stereo: impressione di movimento
 Omnidirezionale: più di un ospite
 Cardioide: solo registrazioni
 Bidirezionale: un ospite
 Altre caratteristiche: Manuale per l'utente
 Per domande frequenti e supporto:
www.eposaudio.com/gaming/support

ES Guía rápida

Contenido de la caja
 Montaje del micrófono
 FRONTAL* | POSTERIOR |
 * Dirección de captación de audio principal
 Conexión del micrófono B20 a un
 ordenador o PS4™
 Conexión de unos auriculares
 Mejora tu experiencia de audio
 > Instala EPOS Gaming Suite
 > Personaliza tu sonido
 Ajuste del volumen de los auriculares
 Ajuste de la ganancia
 Silenciamiento del micrófono
 Hablar al micrófono y
 selección de un patrón de captación
 Dirección de captación de audio principal
 Estéreo: impresión de movimiento
 Omnidireccional: más de un interlocutor
 Cardioide: grabación en solitario
 Bidireccional: un interlocutor
 Otras funciones: Guía del usuario
 Preguntas frecuentes y asistencia:
www.eposaudio.com/gaming/support

PT Guia Rápido

Conteúdos da embalagem
 Montar o microfone
 FRENTE* | TRÁS |
 * Direção de captação de áudio principal
 Ligar o B20 a um computador ou PS4™
 Ligar um auscultador
 Melhore a sua experiência de áudio
 > Instale o EPOS Gaming suite
 > Personalize o seu som
 Ajustar o volume do auscultador
 Ajustar o ganho
 Silenciar o microfone
 Falar para o microfone e
 Selecionar um padrão de captação
 Direção de captação de áudio principal
 Estéreo: impressão de movimento
 Omnidireccional: mais do que um secundário
 Cardioide: apenas gravações
 Bidireccional: um secundário
 Mais recursos: Guia do Utilizador
 Para FAQ e assistência:
www.eposaudio.com/gaming/support

NL Snelle gids

Inhoud van pakket
 De microfoon monteren
 VOORKANT* | ACHTERKANT |
 * Main audio opvangrichting
 De B20 aansluiten op een computer of PS4™
 Een headset aansluiten
 Verbeter je audio-ervaring
 > Installeer de EPOS Gaming-suite
 > Pas je geluid aan
 Headsetvolume aanpassen
 De gain aanpassen
 De microfoon dempen
 Praten in de microfoon en
 het selecteren van een opvangpatroon
 Opvangrichting hoofd-audio
 Stereo: indruk van beweging
 Omnidirectioneel: meer dan één gast
 Cardioïde: alleen opnames
 Bidirectioneel: één gast
 Meer functies: Gebruiksaanwijzing
 Voor veelgestelde vragen en support:
www.eposaudio.com/gaming/support

EL Γρήγορος οδηγός

Περιεχόμενα συσκευασίας
 Τοποθέτηση μικροφώνου
 ΜΠΡΟΣΤΑ* | ΠΙΣΩ | *Κύρια κατεύθυνση λήψης ήχου
 Σύνδεση του B20 σε υπολογιστή ή PS4™
 Σύνδεση ακουστικών
 Βελτιώστε την εμπειρία ήχου σας
 > Εγκατάσταση του EPOS Gaming Suite
 > Προσαρμόστε τον ήχο σας
 Ρύθμιση έντασης ακουστικών
 Ρύθμιση απολαβής
 Σίγαση μικροφώνου
 Ομιλία στο μικρόφωνο και επιλογή κατευθυντικού
 χαρακτηριστικού
 Κύρια κατεύθυνση λήψης ήχου
 Στερεοφωνικά: εντύπωση κίνησης
 Παγκτευθυντικά: περισσότεροι από έναν επισκέπτη
 Καρδιοειδή: μόνο εγγραφές
 Δικτευθυντικά: ένας επισκέπτης
 Περισσότερες δυνατότητες: Οδηγός χρήστη
 Για συχνές ερωτήσεις και υποστήριξη:
www.eposaudio.com/gaming/support

DA Hurtig vejledning

Pakkens indhold
 Montering af mikrofonen
 FOR* | BAG | * Primær retning for audioregistrering
 Tilslutning af B20 til en computer eller PS4™
 Tilslutning af et headset
 Optimer din audiooplevelse
 > Installer EPOS Gaming Suite
 > Tilpas din lyd
 Justering af lydstryken for headset
 Justering af gain
 Afbrudelse af mikrofonen
 Tale ind i mikrofonen & Valg af mikrofonmønster
 Primær retning for audioregistrering
 Stereo: indtryk af bevægelse
 Omnidirectional: mere end én gæst
 Kardioid: optagelser alene
 Tovejs: én gæst
 Flere funktioner: Brugsanvisning
 Se FAQ og support:
www.eposaudio.com/gaming/support

